



The Rexel vision is that every office worker can work confidently and productively with distinctive tools that are the intelligent choice for the task.



The GBC vision is that everyone, from the office to home, to school users, can depend on our business machines and supplies to provide outstanding professional results, time after time.



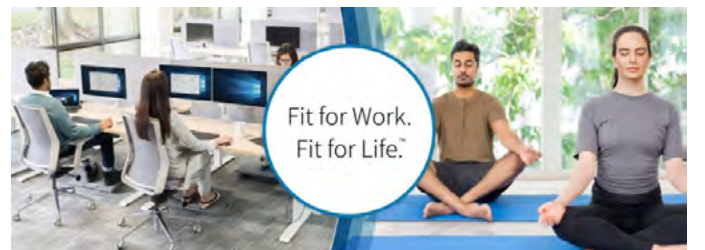
Through leadership and originality the Leitz vision is to be the leading premium brand for the office and beyond by breaking boundaries in quality, design and performance.



The Nobo vision is that every worker can enjoy a clearer, more creative and collaborative environment.



Kensington products are designed to meet the needs of the modern professional whether in the office, at home or on the road.



Product Name	P/L	CAT
350G Rexpro Guillotine A4	19	53
350T Rexpro Guillotine A4	19	53
3600 & 4600 Pro Series Laminators	4	22
380PG Rexpro Guillotine A4	19	53
4000LM A2 Laminator	4	22
420PG Rexpro Guillotine A3	20	53
A4 Sketch Books	16	41
Academy + Laminator	4	22
Active Popper Folders A4	15	42
Air Purifiers	18	51
Anti-Fatigue Floor Mat	19	47
Apollo 180 Heavy Duty Stapler	11	34
Aquarius Full Strip Metal Stapler	11	31
Archive Boxes	17	45
Attendance Registers	16	44
Auto+ 45X & 50X Optimum Shredder	1	9
Auto+ 90X P4 Optimum Shredder	1	9
Auto+ 130M & 130X Optimum Shredder	1	9
Auto+ 150X & 225X Optimum Shredder	1	8
Auto+ 300M & 300X Optimum Shredder	1	8
Auto+ 600M & 600X Optimum Shredder	1	7
Auto+ 750M & 700X Optimum Shredder	1	7
Backrest Conform & Lumbar	18	47
Bambi Stapler	11	32
Binding Covers	10	24
Board Bright	16	43
Bright Paper/Board	17	43
Buddi Stapler	11	32
C100 & C110 GBC CombBinder	6	28
C150 GBC Pro Ibmatic Binder	7	27
C200 & C200E GBC CombBinder	6	28
C210 GBC Binder	6	27
C250 GBC Pro Kombo Binder	7	27
C340 GBC Comb Binder	6	27
C366 & C366E GBC Combinder	6	27
C450E GBC Combinder	6	27
C800 GBC Pro + F/Pedal Binder	7	27
Carry Active Folder A3, A4 & A5	15	42
Clickbind	7	29
Clipframes	23	59
Desk Top Kit Stapler & Punch	11	32
Drivers Log Books	17	44
Dust Cover for Lever Arch Files	17	45
Easels	23	59
Easy Riser Laptop Cooling Stand	18	50
Electric Staplers	12	35

Product Name	P/L	CAT
ET230 2 Hole Punch	14	38
Eyelet Punch	15	38
Foot rests	18	47
Foton 30 AutoFeed Laminator & Cartridges	4	20
Fusion 1000L A4/A3 Laminator	4	21
Fusion 1100L A4/A3 Laminator	4	21
Fusion 3000L A4/A3 Laminator	4	21
Fusion 3100L A3 Laminator	4	21
Fusion 6000L A3 Laminator	4	21
Fusion 7000L A3 Laminator	4	21
Gazelle Half Strip Staplers	11	30
Gemini Staplers	11	30
Giant 100 Heavy Duty Stapler	11	34
Gladiator 160 Heavy Duty Stapler	11	34
Goliath 100 Heavy Duty Stapler	11	34
HD2300, HD2300X, HD2150 Punch 2 Hole	14	40
HD4150 Punch 4 Hole	15	40
Index Bright Boards	15	43
Inspire+ A4/A3 Laminators	4	22
Juno 105 & 210 Staplers	10	30
Laminating Pouches	5	23
Laptop Cooling Stand	18	50
Leitz iLam Home A4 Laminators	4	21
Leitz iLam Home Office A4/A3 Laminators	4	21
Leitz iLam Touch 2 A3 Laminators	4	21
Leitz iLam Touch Turbo 2 A3Laminators	4	21
Leitz iLam Touch Turbo Pro A3 Laminators	4	21
Leitz IQ Autofeed Office 100 & 150 Shredders	1	10
Leitz IQ Autofeed Office 300 & 600 Shredders	1	10
Leitz Soft Press Staplers	13	33
Lever Arch File Storage Boxes	17	45
Longreach Metal Stapler		34
Magic Clips	15	41
Magnetic Markers	22	58
Memory Foam Seat Cushion	19	48
Mercury 120 Heavy Duty Stapler	11	34
Meteor Metal Stapler	11	31
Momentum Xtra XP418+, XP420+, P420+, XP422+ & XP426+ Shredders	2	13
Momentum M510 & M515 Shredders	2	14
Momentum X308 Shredders	1	14
Momentum X312 & X410 Shredders	1	14
Momentum X415 & X420 Shredders	1	14
Monitor Stand Flat Panel	18	50

Product Name	P/L	CAT
Mouse Pads & Wrist Rests	18	49
Notebooks ColourHide & Leitz	18	41
Odyssey Heavy Duty Stapler	11	34
OHP Film	23	59
Optima 40 & 70 Stapler	12	35
Pencil HB	15	41
Pliers	12	36
Pointers	23	60
Privacy Filters	18	50
ProMax QS Shredders	1	11
Punch & Eyelets	15	38
Quote & Receipt Books	17	44
RLWS35 / RLWS47 / RLWX25 / RSX1538 / RLWX39 Shredder	2	16
SI20 1 Hole Punch	15	38
Screens: Wall & Tripod	24	60
Secure Shredders: S5, X6, X8, X10, MC4 & MC6	1	15
Shred Bags & Oil	3	17
Sirius Full Strip Stapler	12	30
Sit/Stand Work Station	19	48
SpringClip Box File	17	45
Standard 100 & 200 Metal Stapler	11	31
Staple Remover Extract-It & Sola	12	32
Staple Remover H/Duty Swingline	12	34
Staples	10	39
Storage Boxes	17	45
Style Laminators	4	21
T Card Planner	24	60
T200 & T400 ThermoBinder	7	29
Tackers Stapler type	12	36
Taurus Full Strip Stapler	12	30
Till Rolls	17	43
Torador Full Strip Metal Stapler	12	31
Ultima 35 & 65 Ezload Roll Laminator	6	22
V210, V220, V230 & V240 2Hole Punch	14	38
V260/450 2Hole Punch	14	38
V412 4HolePunch	15	40
V430 4 Hole Punch	15	40
VeloBinder	7	29
W15, W20 & W25E WireBinder	7	29
White Boards Accessories	23	58
White Boards Home Range	23	56
White Boards Office	23	57
X15 Staplers	11	32

## THE ULTIMATE PORTFOLIO OF HOME & OFFICE SHREDDERS



Optimum  
Autofeed+



Momentum  
Extra



Momentum



ProMax QS



Secure



SELECT A WORLD CLASS PRODUCT  
& Work with Confidence

# Contents



## REXEL & LEITZ SHREDDERS

POPI Information	2
How to choose a Shredder	3
<b>SHREDDER SELECTOR GUIDE</b>	<b>4-5</b>
Optimum AutoFeed+ Shredders	6-9
Leitz Autofeed Shredders	10
Promax QS Shredders	11
Momentum Extra Shredders	12-13
Momentum Shredders	14
Secure Shredders	15
Wide Entry Shredders	16
Shredder Oil & Shredder Bags	17



## DOCUMENT PROTECTION SOLUTIONS

<b>LAMINATOR SELECTOR GUIDE</b>	<b>18-19</b>
GBC Foton 30 Automatic Laminator	20
Leitz & GBC Laminators	21
GBC & Rexel Laminators	22
Copy Shop Laminators	22
Roll Laminating	22
Laminating Pouches & Roll Film	23



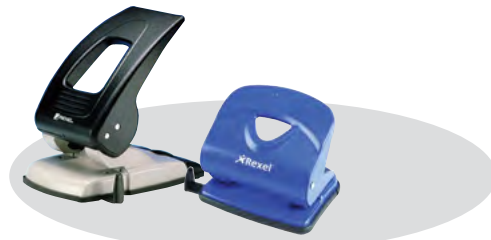
## GBC DOCUMENT BINDING SOLUTIONS

<b>BINDER SELECTOR GUIDE</b>	<b>24-25</b>
Select the Right Binding Style	26
CombBind Frequent to Moderate Use	27
CombBind Moderate to Light Use	28
Multi Functional Comb & Wire Binding	28
Wire Bind	29
ClickBind, VeloBind & ThermaBind	29



## REXEL, LEITZ & RAPID STAPLERS

Plastic Clad Staplers Full & Half Strip	30
Metal Staplers	31
Scholastic Staplers & Staple Removers	32
Rexel & Leitz Low Force Staplers	33
Heavy Duty & Specialist Staplers	34
Rexel & Rapid Electric Staplers	35
Rexel, Rapid & Leitz Pliers and Trackers	36
Rexel, Rapid & Leitz Staples	37



## REXEL & LEITZ PUNCHES

Two Hole Value Punches	38
Leitz NeXXt Premium Punches	39
Heavy Duty & Specialist Punches	40



## REXEL SUNDRIES

Rexel Notebooks	41
Clips & Pencils	41
Files & Folders	42



## PAPER & BOARD

Rexpro Indexes, Bright Paper & Board & Till Rolls	43
Rexpro Books	44



## STORAGE

Rexpro Storage Boxes	45
----------------------	----

## OCCUPATIONAL HEALTH: WORKPLACE WELLNESS

Kensington Back, Foot Rests & Anti-Fatigue Mat	47
Kensington Seat Rest Cushions & Sit/Stand workstation	48
Kensington Wrist Rest, Mouse Pad & Copy Holder	49
Kensington Laptop Risers, Cooling Stand, Monitor Stands & Screen Filters	50
Leitz - Trusens Air Purifiers	51

## TRIMMERS & GUILLOTINES

Leitz & Rexpro Trimmers and Guillotines	52-54
---	-------

## NOBO VISUAL COMMUNICATION

Nobo Home Range of Dry Wipe Boards	56-58
Magnets, Markers	58
White Board Accessories	58
Flipchart Easels & OHP	59
Screens, Tripod & Wall	60
Performance Planning Boards & Pointers	60

# ARE YOU **POPI** READY?

Protection Of Personal Information Act



## SHREDDERS

### Did you know?

Identity theft is costing our economy close to R1 billion per year. (Forensics 4 Africa). According to the POPI Act, businesses who do not dispose of client information could face fines of up to R10 million.

### What is POPI/POPIA?

The **Protection Of Personal Information Act (POPI)**, gazetted on the 26 November 2013, it came into effect 1 July 2020 and calls for businesses and organisations to take appropriate action with regards to the acquisition, storage and destruction of personal information. It requires that policies and practices are put in place to prevent the reconstruction of discarded personal information in an intelligible form.

### Why Shred?

The **POPI Act** will have the effect of increasing market demand for shredding. Companies and individuals not already destroying unwanted confidential information will begin to do so. Those in the habit and discipline of shredding will have cause to consider more secure levels of destruction. In the UK for example the Data Protection Act changed market demand from predominantly straight cut shredding to predominantly cross cut & micro cut shredding in the space of two to three years.

### Why Autofeed shredding?

#### People Friendly

Spend 98% less time shredding. Simply stack, shut and walk away! Auto feed shredding increases productivity.

#### Pocket Friendly

Auto feed shredding saves time and money. Intelligent power save feature limits power usage. Offsite solutions are costly and can place an administrative load on employees.

#### Security Friendly

Onsite shredding eliminates the "lost in transit" risk, giving better control over document destruction. Rest assured your sensitive info cannot be reconstructed once shredded.

#### Choice Friendly

We offer a range of **16 Rexel** plus **4 Leitz Autofeed** shredders that can shred from 45 to 750 sheets automatically. Available in cross cut and micro cut.

### What does it mean for you?

- You will need higher levels of security than straight cut (P2) shredders provide.
- Rexel Optimum AutoFeed Shredders** and **Leitz AutoFeed Shredders** are available in security levels P4 and P5 and are therefore an ideal **POPI** shredding solution.
- Rexel and Leitz AutoFeed Shredders** offer the latest innovative technology backed by reliable after sales service.

## THE ULTIMATE PORTFOLIO OF HOME & OFFICE SHREDDERS



Cuts 1 A4 page into 300 pieces



Cuts 1 A4 page into 400 pieces



Cuts 1 A4 page into 2000 pieces



Legal, Banking & Finance Documents



Government & Health Care Documents



Corporate Businesses Documents



SME's & SMB's Documents



Home Office Documents

# How to choose a shredder

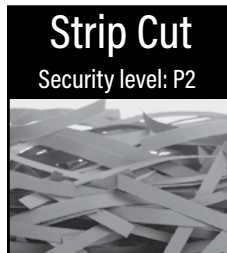


Step

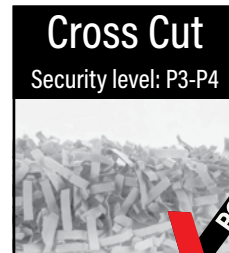
1

## Select Cut Type

How much security do you need?



Cuts 1 A4 sheet into 36 pieces



Cuts 1 A4 sheet into 300 - 400 pieces

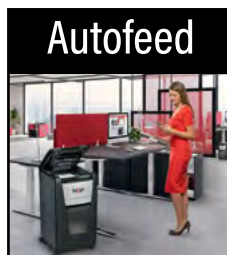


Cuts 1 A4 sheet into 2000 - 6000 pieces

Step

2

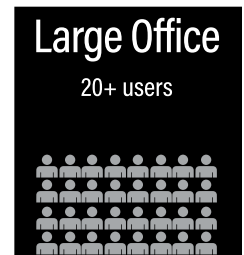
## Select Feed Type



Step

3

## Number of Users



Step

4

## Sheet Capacity



A higher sheet capacity means less time spent shredding

Step

5

## Bin Size



A larger bin allows more shredding before emptying the bin

Cuts 1 A4 Page Into	Shredder Model	Page	Rexel Code	Users	Max shts/pass	Cut	Bin Size Litres/(Sheets)	Cut Size (mm)	Decibel Level	Entry Width (mm)	Jam Free	Speed m/min	Auto Oil	
<b>P2 (36)</b>	Secure S5	15	303001	1	5	Straight	10 (75)	6	<70 dBA	220		1.8		
	Promax QS RES1123	11	300003Q	1	12	Straight	23 (175)	5.8	68 dBA	220		2.0		
	Promax QS RSS1535	11	300058P	5-10	15	Straight	35 (280)	6	69 dBA	220		3.0		
	Promax QS RSS1838	11	300063Q	5-10	18	Straight	35 (280)	6	69 dBA	220		3.0		
	RLWS35	16	300024	20+	35	Straight	175 (1400)	6	60 dBA	400		7.2		
	RLWS47	16	302101	20+	47	Straight	225 (1800)	6	60 dBA	405		12	✓	
<b>P3 (300)</b>	Momentum X308	14	303004	1	8	Cross	15 (100)	5 x 42	70 dBA	220		1.8		
	Momentum X312 SL	14	303008	1	12	Cross	23 (225)	4 x 28	62 dBA	220	✓	1.8		
	Optimum AutoFeed+ 45X	9	301396	1	45	Cross	20 (150)	4 x 28	55 dBA	220		1.7		
	Optimum AutoFeed+ 50X	9	301397	1	50	Cross	20 (150)	4 x 28	55 dBA	220		1.7		
	Optimum AutoFeed+ 90X	9	301411	1	90	Cross	34 (250)	4 x 28	55 dBA	220		1.8		
	Secure X6	15	303800	1	6	Cross	10 (100)	4 x 40	68 dBA	220		1.8		
	Secure X8	15	303805	1	8	Cross	14 (125)	4 x 40	68 dBA	220		1.8		
	Secure X10	15	303810	1	10	Cross	18 (150)	4 x 40	68 dBA	220		1.8		
	ProMax QS REX823	11	300004Q	1	8	Cross	23 (240)	4 x 40	58 dBA	220		1.8		
	Momentum X410	14	303010	1	10	Cross	23 (225)	4 x 28	62 dBA	220	✓	1.8		
	Optimum AutoFeed+ 130X	9	301414	1-2	130	Cross	44 (350)	4 x 28	55 dBA	220		1.8		
	Optimum AutoFeed+ 150X	8	301416	1-2	150	Cross	44 (350)	4 x 28	55 dBA	230		1.8		
	IQ AutoFeed Office 100	10	303430	1-2	100	Cross	34 (250)	4 x 30	55 dBA	220		1.8		
	IQ AutoFeed Office 150	10	303435	1-2	150	Cross	44 (350)	4 x 30	55 dBA	220		1.8		
	ProMax QS RSX1538	11	300064Q	5-10	15	Cross	38 (350)	4 x 40	58 dBA	240		3.0		
	Optimum AutoFeed+ 225X	8	301417	5-10	225	Cross	60 (500)	4 x 25	55 dBA	230		2.2		
	Optimum AutoFeed+ 300X	8	301422	5-10	300	Cross	60 (500)	4 x 25	55 dBA	230		2.2		
	<b>P4 (400)</b>	Momentum Extra P420+	13	301087	5-10	20	Cross	60(550)	4 x 35	55 dBA	220			
Momentum Extra XP420+		13	301074	5-10	20	Cross	60(550)	4 x 40	55 dBA	220				
Momentum Extra XP418+		13	301062	5-10	18	Cross	45(400)	4 x 40	55 dBA	220				
ProMax QS RSX1035		11	300060Q	5-10	10	Cross	35 (460)	4 x 40	58 dBA	220		1.8		
Momentum X420		14	303016	5-10	20	Cross	30 (275)	4 x 40	58 dBA	220		1.8		
Momentum X415		14	303014	5-10	15	Cross	23 (225)	4 x 40	58 dBA	220	✓	1.8		
IQ AutoFeed Office 300		10	303440	5-10	300	Cross	60 (500)	4 x 30	55 dBA	230		2.2		
Optimum AutoFeed+ 600X		7	301433	10-20	600	Cross	110 (900)	4 x 36	55 dBA	230		1.8		
Optimum AutoFeed+ 750X		7	301436	10-20	750	Cross	140 (1100)	4 x 30	55 dBA	230		1.8		
IQ AutoFeed Office 600		10	303445	10-20	600	Cross	110 (900)	4 x 30	55 dBA	230		1.8		
Momentum Extra XP422+		13	301076	10-20	22	Cross	85(800)	4 x 40	55 dBA	220				
Momentum Extra XP426+		13	301037	10-20	26	Cross	120(1100)	4 x 40	55 dBA	220				
RLWX25		16	300032	20+	25	Cross	175 (1800)	4 x 40	60 dBA	400		6		
RLWX39		16	301044	20+	39	Cross	225 (2000)	4 x 40	60 dBA	405		9	✓	
<b>P5 (2000)</b>		Secure MC4	15	301029	1	4	Micro	14 (150)	2 x 15	55 dBA	220		1.8	
		Secure MC6	15	301031	1	6	Micro	18(175)	2 x 15	55 dBA	220		1.8	
		Optimum AutoFeed+ 130M	9	301439	1-2	130	Micro	44 (100)	4x28	55 dBA	230		1.7	
		Optimum AutoFeed+ 300M	8	301443	5-10	300	Micro	60 (700)	4 x 25	55 dBA	230		2.2	
	Momentum M510	14	303018	5-10	10	Micro	23 (225)	2 x 15	58 dBA	223		1.8		
	Optimum AutoFeed+ 600M	7	3014450	10-20	600	Micro	110 (1300)	2 x 15	55 dBA	230		1.8		
	Optimum AutoFeed+ 750M	7	301447	10-20	750	Micro	140 (1600)	4 x 30	55 dBA	240		1.8		

Cuts 1 A4 page into 36 pieces	Cuts 1 A4 page into 300 pieces	Cuts 1 A4 page into 400 pieces	Cuts 1 A4 page into 2000 pieces	On all Shredders
-------------------------------	--------------------------------	--------------------------------	---------------------------------	------------------

# Shredder Selector Guide

Power Consumption (W)	Machine/Cutter Warranty	Run Time / Cool Down	Height x Width x Depth (mm)	Packed Weight (kg)	Shreds CDs/ Credit Cards (CC)	Waste Sack Order Code	Shredder Model	Security Level	Page
230	2	3/15	327 x 155 x 286	1.6			Secure S5	P2	15
230	2/7	8/25	466 x 345 x 230	5.8	CC		Promax QS RES1123	P2	11
276	2/10	8/25	560 x 345 x 245	6.9	CC		Promax QS RSS1535	P2	11
276	2/10	8/25	660 x 560 x 396	13	CC		Promax QS RSS1838	P2	11
1300	2/20	Continuous	970 x 640 x 590	103	CD + CC	300097	RLWS35	P2	16
1600	2/20	Continuous	1010 x 640 x 590	136	CD + CC	300097	RLWS47	P2	16
160	2	3/60	343 x 325 x 229	4.5			Momentum X308	P3	14
280	2	6/60	423 x 356 x 238	8			Momentum X312 SL	P3	14
200	2	10/45	345 x 363 x 430	7.7	CC		Optimum AutoFeed+ 45X	P4	9
200	2	10/45	405 x 363 x 430	7.7	CC		Optimum AutoFeed+ 50X	P4	9
180	2	20/45	530 x 365 x 430	12.5	CC		Optimum AutoFeed+ 90X	P4	9
230	2	2/35	302 x 170 x 321	3.3			Secure X6	P4	15
230	2	3/35	377 x 170 x 321	3.1			Secure X8	P4	15
230	2	4/35	395 x 220 x 338	5.2			Secure X10	P4	15
240	2/7	15/30	335 x 460 x 240	6.6	CC		ProMax QS REX823	P4	11
280	2/2	6/60	423 x 356 x 238	8			Momentum X410	P4	14
200	2	30/45	618 x 365 x 430	12.5	CC	300092	Optimum AutoFeed+ 130X	P4	9
300	2	30/45	618 x 365 x 430	12.5	CC	300092	Optimum AutoFeed+ 150X	P4	8
300	2	20/45	940 x 520 x 510	44.2	CC		IQ AutoFeed Office 100	P4	10
300	2	30/45	530 x 365 x 430	14.2	CC	300092	IQ AutoFeed Office 150	P4	10
276	2/10	30/30	630 x 410 x 310	14.6	CC	300092	ProMax QS RSX1538	P4	11
400	2	30/45	830 x 500 x 550	18	CC	300092	Optimum AutoFeed+ 225X	P4	8
170	2	60/45	650 x 350 x 490	18.7	CC	300092	Optimum AutoFeed+ 300X	P4	8
230	2	240/60	590 x 410 x 320	22	CD + CC	300092	Momentum Extra P420+	P4	13
230	2	Continuous	730 x 520 x 460	22	CD + CC	300092	Momentum Extra XP420+	P4	13
230	2	Continuous	680 x 480 x 460	29	CD + CC	300092	Momentum Extra XP418+	P4	13
240	2/10	15/30	345 x 560 x 245	6.5	CC		ProMax QS RSX1035	P4	11
450	2/2	240/60	542 x 406 x 320	22			Momentum X420	P4	14
350	2	120/60	465 x 370 x 279	14			Momentum X415	P4	14
300	2	Continuous	618 x 365 x 430	15.3	CC	300092	IQ AutoFeed Office 300	P4	10
210	2	240	960 x 510 x 570	43	CC	300092	Optimum AutoFeed+ 600X	P4	7
270	2	240	1062 x 510 x 570	44.2	CC	300097	Optimum AutoFeed+ 750X	P4	7
480	2	Continuous	735 x 415 x 465	18.3	CC	300096	IQ AutoFeed Office 600	P4	10
230	2	Continuous	880 x 520 x 460	22	CD + CC	3000139	Momentum Extra XP422+	P4	13
230	2	Continuous	1030 x 560 x 510	59	CD + CC	300096	Momentum Extra XP426+	P4	13
1300	2/20	Continuous	970 x 640 x 590	108	CD + CC	300097	RLWX25	P4	16
1600	2/20	Continuous	1010 x 640 x 590	136	CD + CC	300097	RLWX39	P4	16
	2	6/38	320 x 380 x 170	4.51			Secure MC4	P5	15
	2	6/37	340 x 400 x 220	5.6			Secure MC6	P5	15
210	2	10/35	618 x 365 x 430	12.5	CC	300092	Optimum AutoFeed+ 130M	P5	9
400	2	60	650 x 350 x 490	18.7	CC	300092	Optimum AutoFeed+ 300M	P5	8
350	2	120/60	465 x 370 x 279	12.5			Momentum M510	P5	14
450	2	240	960 x 510 x 570	43	CC	300096	Optimum AutoFeed+ 600M	P5	7
700	2	240	1062 x 510 x 570	44.02	CC	300097	Optimum AutoFeed+ 750M	P5	7

Cuts 1 A4 page into <b>36</b> pieces	Cuts 1 A4 page into <b>300</b> pieces	Cuts 1 A4 page into <b>400</b> pieces	Cuts 1 A4 page into <b>2000</b> pieces	<b>2</b> Year Guarantee	On all Shredders
--------------------------------------	---------------------------------------	---------------------------------------	--	-------------------------	------------------



# Optimum AutoFeed+ Shredders



- SHREDDING
- LAMINATING
- BINDING
- STAPLING
- PUNCHING
- SUNDRIES
- PAPER & BOARD
- STORAGE
- ERGONOMICS
- GUILLOTINES
- VISUAL COMMUNICATION



## AutoFeed Technology - Time To Do More

Not enough time to stand at the paper shredder? When bulk shredding, Rexel Optimum AutoFeed+ automatic shredders are proven to save 98%\* of the time you waste hand feeding documents into a standard shredder. So why wait, when you can Auto shred with Rexel?



**Stack up to 750 sheets**



**Shut**



**Done**

\* Saving 98% of time compared to manual shredding.





\*Shredding supports POPI/GDPR compliance



# Optimum AutoFeed+ Shredders | Large Office



## > Optimum AutoFeed+ 750M 750 Sheets Optimum AutoFeed+ 750X 750 Sheets

750M 750X



## > Optimum AutoFeed+ 600M 600 Sheets Optimum AutoFeed+600X 600 Sheets

600M 600X



Model	750M	750X	600M	600X
Rexel Code	301447	301436	301445OP	301433
On Pack Code	2020750MZA	2020750XEU	2020600MEU	2020600XEU
No. of users	20+	20+	10-20	10-20
Sheets AutoFeed	750	750	600	600
Sheets Manual Feed	15	20	10	15
Security level	P-5 (2x15mm)	P-4 (4x30mm)	P-5 (2x15mm)	P-4 (4x36mm)
Cut Type	Micro Cut	Cross Cut	Micro Cut	Cross Cut
Bin Size	140L	140L	110L	110L
Run Time	4 hours	4 hours	4 hours	4 hours
PIN Lock	✓	✓	✓	✓
Shreds Staples/Paper Clips/Credit Cards	✓	✓	✓	✓
Anti-Jam Technology	✓	✓	✓	✓
Infra Red Bin Full Sensor	✓	✓	✓	✓

Up to 140 litre bin capacity

Up to 4 hours continuous run time

Intuitive control panel

PIN lock on larger models for extra security

### Accessories for AutoFeed+ Automatic Shredders

On Pack Code	Rexel Code	Description
2101948	300099	Oil Sheets (Pack 12) Rexel

# Optimum AutoFeed+ Shredders | Office

**2**  
Year Guarantee

**AUTO FEED**



## > Optimum AutoFeed+ 300M 300 Sheets Optimum AutoFeed+ 300X 300 Sheets

300M 300X

- P5
- P4
- 60L
- 1 hr
- PIN



## > Optimum AutoFeed+ 225X 225 Sheets

225X

- P4
- 60L
- 30 min



## > Optimum AutoFeed+ 150X 150 Sheets

150X

- P4
- 44L
- 30 min



Stack, Shut, Done!



Guarantee on all models



98% Time Saving



Workers Shred in Batches



POPI Recommended

Model	300M	300X	225X	150X
Rexel Code	301443	301422	301417	301416
On Pack Code	2020300MEU	2020300XZA	2020225XZA	2020150XZA
No. of users	5-10	5-10	5-10	1-2
Sheets AutoFeed	300	300	225	150
Sheets Manual Feed	8	10	10	8
Security level	P-5 (2x15mm)	P-4 (4x25mm)	P-4 (4x25mm)	P-4 (4x28mm)
Cut Type	Micro Cut	Cross Cut	Cross Cut	Cross Cut
Bin Size	60L	60L	60L	44L
Run Time	1 hour	1 hour	30 min	30 min
PIN Lock	✓	✓	-	-
Shreds Staples/Paperclips/Credit Cards	✓	✓	✓	✓
Anti-Jam Technology	✓	✓	✓	✓
Infra Red Bin Full Sensor	✓	✓	✓	✓

SHREDDING  
LAMINATING  
BINDING  
STAPLING  
PUNCHING  
SUNDRIES  
PAPER & BOARD  
STORAGE  
ERGONOMICS  
GUILLOTINES  
VISUAL COMMUNICATION



\*Shredding supports POPI/GDPR compliance



# Optimum AutoFeed+ Shredders | Small /Home Office



## > Optimum AutoFeed+ 130M 130 Sheets

130M



## > Optimum AutoFeed+ 130X 130 Sheets

130X



## > Optimum AutoFeed+ 90X 90 Sheets

90X



## > Optimum AutoFeed+ 50X 50 Sheets Optimum AutoFeed+ 45X 45 Sheets

50X



45X



Stack, Shut, Done!



Guarantee on all models



98% Time Saving



Workers Shred in Batches



POPI Recommended

Model	130M	130X	90X	50X	45X
Rexel Code	301439	301414	301411	301397	301396
On Pack Code	2020130MEU	2020130XZA	2020090XZA	2020050XSA	2020045XSA
No. of users	1-2	1-2	1	1	1
Sheets AutoFeed	130	130	90	50	45
Sheets Manual Feed	6	8	8	6	6
Security level	P-5 (2x15mm)	P-4 (4x28mm)	P-4 (4x28mm)	P-4 (4x28mm)	P-4 (4x28mm)
Cut Type	Micro Cut	Cross Cut	Cross Cut	Cross Cut	Cross Cut
Bin Size	44L	44L	34L	20L	20L
Run Time	30 min	30 min	20 min	10 min	10 min
Shreds Staples/Paperclips/Credit Cards	✓	✓	✓	✓	✓
Anti-Jam Technology	✓	✓	✓	✓	✓
Infra Red Bin Full Sensor	✓	✓	✓	✓	✓



# Leitz IQ AutoFeed Shredders | Office



## > IQ Autofeed Office 600 600 Sheets

- 
- 
- 



## > IQ Autofeed Office 300 300 Sheets

- 
- 
- 



## > IQ Autofeed Office 150 150 Sheets

- 
- 
- 



## > IQ Autofeed Office 100 100 Sheets

- 
- 
- 



Stack, Shut, Done!	Guarantee on all models	Ultra Quiet	Eco Sleep Mode	POPI Recommended

Model	Office 600	Office 300	Office 150	Office 100
Rexel Code	303445	303440	303435	303430
On Pack Code	80170000	80150000	80130000	80110000
No. of users	10-20	5-10	1-2	1-2
AutoFeed	600	300	150	100
Sheets Manual Feed	15	10	8	8
Security level	P-4 (4x36mm)	P-4 (4x30mm)	P-4 (4x30mm)	P-4 (4x30mm)
Cut Type	Cross Cut	Cross Cut	Cross Cut	Cross Cut
Bin Size	110L	60L	44L	34L
Run Time	4 hours	60 minutes	30 minutes	20 minutes
Shreds Staples/Paperclips/Credit Cards	✓	✓	✓	✓
Anti-Jam Technology	✓	✓	✓	✓
Eco Sleep Mode	✓	✓	✓	✓



\*Shredding supports POPI/GDPR compliance



## ProMax QS Shredders | Office



### More shredding, less stopping

Updated and enhanced with quieter and more powerful motor. Plus advanced fan cooling technology to significantly improve run times, meaning you can shred for even longer.

#### > ProMax QS RSX1538



#### > ProMax QS RSS1838



#### > ProMax QS RSX1035



#### > ProMax QS RSS1535



#### > ProMax QS REX823



#### > ProMax QS RES1123



Model	RSX1538	RSX1035	REX823	RSS1838	RSS1535	RES1123
Rexel Code	300064Q	300060Q	300004Q	300063Q	300058Q	300003Q
On Pack Code	2104587EU	2104585EU	2104583EU	2104588EU	2104586EU	2104584EU
No. of users	5-10	5-10	Executive	5-10	5-10	Executive
Sheet Capacity (80gsm)	15	10	8	18	15	12
Security level	P-4 (4x40mm)	P-4 (4x40mm)	P-4 (4x40mm)	P-2 (6mm)	P-2 (6mm)	P-2 (6mm)
Cut Type	Cross	Cross	Cross	Strip	Strip	Strip
Bin Size	38L	35L	23L	38L	35L	23L
Run Time (Mins)	30/30	15/30	15/30	30/30	15/30	15/30
Shreds Staples/Paperclips/ Credit Cards	✓	✓	✓	✓	✓	✓

**NEW** Momentum Extra Jam-Free Paper Shredders

SHREDDING

LAMINATING

BINDING

STAPLING

PUNCHING

SUNDRIES

PAPER & BOARD

STORAGE

ERGONOMICS

GUILLOTINES

VISUAL COMMUNICATION



**Extra power**  
to shred even more



› **Extra** large bin › **Extra** run time › **Extra** sheet capacity

## Rexel Momentum Extra Jam-Free Paper Shredders

Jam-free active sensing technology measures the number of sheets being fed in real-time to stop paper jams. The extra-large bins, longer run times and increased sheet capacity make these paper shredders ideal for any office environment.



\*Shredding supports POPI/GDPR compliance



# NEW Momentum Extra Shredders | Large Office



## > Momentum Extra XP426+ 26 Sheets

- P4
- 26
- 120 Litres
- ULTRA QUIET



## > Momentum Extra XP422+ 22 Sheets

- P4
- 22
- 85 Litres
- ULTRA QUIET



## > Momentum Extra XP420+ / P420+ 20 Sheets

- P4
- 20
- 60 Litres
- ULTRA QUIET



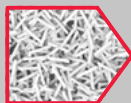
Replaces: Mercury RDX1850

## > Momentum Extra XP418+ 18 Sheets

- P4
- 18
- 45 Litres
- ULTRA QUIET



**Active Sensing Technology**  
Measures the number of sheets to stop paper jams



**P4 high security level**  
With increased bin capacity



**Continuous run time**  
For frequent shredding



**Separate feed slot**  
Shreds CD's, DVD's and credit cards

Model	XP426+	XP422+	XP420+	XP418+	P420+
Rexel Code	301037	301076	301074	301062	301087
On Pack Code	2021426XEU	2021422XEU	2021421XEU	2021418XEU	2021420XEU
No. of users	20+	10-20	10-20	5-10	5-10
Sheets Manual Feed	26	22	20	18	18
Security level	P-4 (4x30mm)	P-4 (4x35mm)	P-4 (4x35mm)	P-4 (4x35mm)	P-4 (4x35mm)
Cut Type	Cross Cut	Cross Cut	Cross Cut	Cross Cut	Cross Cut
Bin Size	120L	85L	60L	45L	30L
Run Time	Continuous	Continuous	Continuous	Continuous	4 hours
Noise Level (dBA)	55	55	55	55	55
Slot for CD/DVD/Credit Card	✓	✓	✓	✓	✓
Shreds Staples/Paperclips	✓	✓	✓	✓	✓
Jam Free Technology	✓	✓	✓	✓	✓

# Momentum Shredders | Small Office

2 Year Guarantee



## > Momentum X420 20 Sheets

X420

- P4
- 30L
- 4Hr
- ANTI-JAM



## > Momentum X415 15 Sheets Momentum M510 10 Sheets

X415 M510

- P4
- P5
- 23L
- 2Hr
- ANTI-JAM



## > Momentum X312 SL 12 Sheets Momentum x410 10 Sheets

X312 SL X410

- P3
- P4
- 23L
- ANTI-JAM



## > Momentum X308 8 Sheets

X308

- P3
- 15L



Up to 4 hours continuous run time with Rexel Momentum shredding range.



Anti-jam technology\* automatically stops and reverses when too much paper is inserted.



Simple and intuitive touch controls for easy operation.

Cuts 1 A4 page into 300 pieces

Cuts 1 A4 page into 400 pieces

Cuts 1 A4 page into 2000 pieces

Model	X420	X415	M510	X312 SL	X410	X308
Rexel Code	303016	303014	303018	303008	303010	303004
On Pack Code	2104578EU	2104576EU	2104575EU	2104574EU	2104571EU	2104570EU
No. of users	5-10	5-10	5-10	1-2	1-2	1
Sheets Manual Feed	20	15	10	12	10	8
Security Level	P4 (4x40mm)	P4 (4x40mm)	P5 (2x15mm)	P3 (5x42mm)	P4 (4x40mm)	P3 (5x42mm)
Cut Type	Cross Cut	Cross Cut	Micro Cut	Cross Cut	Cross Cut	Cross Cut
Bin Size	30L	23L	23L	23L	23L	15L
Run Time	4 hours	2 hours	2 hours	6 min	6 min	3 min
Shreds Staples/P/clips	✓	✓	✓	✓	✓	✓
Anti-Jam Technology	✓	✓	✓	✓	✓	

\*excludes X308

SHREDDING  
LAMINATING  
BINDING  
STAPLING  
PUNCHING  
SUNDRIES  
PAPER & BOARD  
STORAGE  
ERGONOMICS  
GUILLOTINES  
VISUAL COMMUNICATION





\*Shredding supports POPI/GDPR compliance



# Secure Shredders | Home / Home Office



## > Secure S5 5 Sheets

- P2
- 5
- 10 Litres



## > Secure X6 6 Sheets

- P4
- 6
- 10 Litres



## > Secure X8 8 Sheets

- P4
- 8
- 14 Litres



## > Secure X10 10 Sheets

- P4
- 10
- 18 Litres



## > Secure MC4 Whisper-Shred™ 4 Sheets

- P5
- 4
- 14 Litres
- ULTRA QUIET



## > Secure MC6 Whisper-Shred™ 6 Sheets

- P5
- 6
- 18 Litres
- ULTRA QUIET



Model	Secure S5	Secure X6	Secure X8	Secure X10	Secure MC4	Secure MC6
Rexel Code	303001	303800	303805	303810	301029	301031
On Pack Code	2020121SA	2020122ZA	2020123ZA	2020124ZA	2020129EU	2020130EU
No. of users	Personal	Personal	Personal	Personal	Personal	Personal
Sheets Manual Feed (80gsm)	5	6	8	10	4	6
Security Level	P-2 (6mm)	P-4 (4x40mm)	P-4 (4x40mm)	P-4 (4x40mm)	P-5 (2x15mm)	P-5 (2x15mm)
Cut Type	Strip Cut	Cross Cut	Cross Cut	Cross Cut	Micro Cut	Micro Cut
Bin Size	10L	10L	14L	18L	14L	18L
Run Time (Mins)	3	3	3	3	6	6
dBA Noise Level	<68	<68	<68	<68	<55	<55
Staples & Paperclips	✓	✓	✓	✓	✓	✓



## Wide Entry Shredders



Extra large wide entry cross cut shredder. High capacity and performance. Engineered for bulk shredding

### > RLWX39 39 Sheets



### > RLWS47 47 Sheets



### > RLWX25 25 Sheets



### > RLWS35 35 Sheets



**P4** Cuts 1 A4 page into 400 pieces

**P2** Cuts 1 A4 page into 36 pieces

Model	RLWX39	RLWX25	RLWS47	RLWS35
Rexel Code	301044	300032	302101	300024
On Pack Code	2103039EU	2103025EU	2103047EU	2103035EU
No. of users	20+	20+	20+	20+
Sheets Manual Feed (80gsm)	39	25	47	35
Security level	P-4 (4x40mm)	P-4 (4x40mm)	P-2 (5.8mm)	P-2 (5.8mm)
Cut Type	Cross Cut	Cross Cut	Strip Cut	Strip Cut
Bin Size	225L	175L	225L	175L
Run Time (Mins)	Continuous	Continuous	Continuous	Continuous
Self Oil	✓	✓	✓	✓
Staples, Paperclips, Credit Cards, CDs	✓	✓	✓	✓

# Shredder Oil & Shredder Bags

## Shredder Oil

Synthetic Shredder Oil 250ml

- Apply Lubricant from side to side across scrap sheets of paper.
- Shred the lubricated sheets.
- Reverse the Shredder to distribute lubricant through the cutter.
- Recommended for Confetti Cut Mercury and above.



**Rexel Code**

300105

## Rexel Shredder Oil Sheets

- Easiest way to oil your shredder
- Use once a month to prolong the life of your shredder
- Pack 12



**Rexel Oil Sheets**

Rexel Code	On Pack Code
300099	2101948

## Shredder Oil 7000 Series, 1L

Synthetic Shredder Oil 1L

- Apply Lubricant from side to side across scrap sheets of paper.
- Shred the lubricated sheets.
- Reverse the Shredder to distribute lubricant through the cutter.
- Recommended for Confetti Cut Mercury and above.

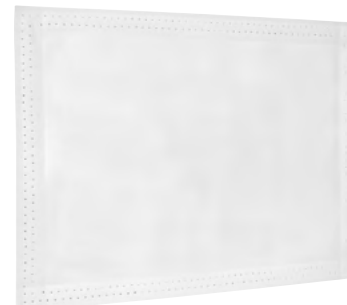


**Rexel Code**

300106

## Leitz Shredder Oil Sheets

- Easiest way to oil your shredder
- Use once a month to prolong the life of your shredder
- Pack 12



**Leitz Oil Sheets**

Rexel Code	On Pack Code
300101	80070000

## Mercury Recyclable Shredder Paper Bags

- Sacks self seal for tidy disposal
- Clean and efficient waste disposal
- Single



Rexel Code	On Pack Code	Capacity
300125	2102442	70L

## Shredder Bags – Recycled Plastic

- Pack of 25



Rexel Code	Capacity
300092	WS3: 38-70L
300139	AS1000: 60-85L
300096	WS2: 110 - 120L
300097	WS2H: 140 - 225L



- SHREDDING
- LAMINATING
- BINDING
- STAPLING
- PUNCHING
- SUNDRIES
- PAPER & BOARD
- STORAGE
- ERGONOMICS
- GUILLOTINES
- VISUAL COMMUNICATION

Laminator Model	Page	Rexel Code	User / Usage	Warm up time (mins)	Speed mm/mins	Maximum Pouch Thickness	Easy Setup	Visual Ready Alert	Audible Ready Alert
GBC/Rexel Style A4 Laminator	22	340001	Entry Level	4	250	150-250	✓	✓	-
GBC/Rexel Style A3 Laminator	22	340002	Entry Level	4	250	150-250	✓	✓	-
GBC Inspire + A4 Laminator	22	340003	Entry Level	4	250	150mic	✓	✓	-
GBC Inspire + A3 Laminator	22	340004	Entry Level	4	250	150	✓	✓	-
GBC Fusion 1000L A4 Laminator	21	340007	Executive & Home Office	4	330	150	✓	✓	-
GBC Fusion 1000L A3 Laminator	21	340008	Executive & Home Office	4	330	150	✓	✓	-
GBC Fusion 1100L A4 Laminator	21	340011	Executive & Home Office	3	330	250	✓	✓	✓
GBC Fusion 1100L A3 Laminator	21	340016	Executive & Home Office	3	330	250	✓	✓	✓
GBC Fusion 3000L A4 Laminator	21	340027	Small Office	1	500	250	✓	✓	✓
GBC Fusion 3000L A3 Laminator	21	340037	Small Office	1	500	250	✓	✓	✓
GBC Fusion 3100L A3 Laminator	21	340041	Small Office	1	800	350	✓	✓	✓
Academy+ A3 Laminator	22	340042	Education	2	800	500	✓	✓	-
GBC Fusion 6000L A3 Laminator	21	340047	Large Office	1	1200	500	✓	✓	✓
GBC Fusion 7000L A3 Laminator - 6 Roller	21	340052	Large Office	1	1400	500	✓	✓	✓
Leitz iLam Touch 2 A3 Laminator - 6 Roller	21	344040	Large Office	1	1000	150-250	✓	✓	-
Leitz iLam Touch Turbo 2 A3 Laminator - 6 Roller	21	344045	Large Office	1	1500	150-250	✓	✓	-
Leitz iLam Touch Turbo Pro A3 Laminator - 6 Roller	21	344050	Large Office	1	2000	150-250	✓	✓	-
GBC 4000LM A2 Laminator	22	340057	Copy Shop		470	500	✓	✓	
GBC Pro Series 3600 A3 Laminator	22	340056P	Copy Shop	6	1400	500	✓	✓	
GBC Pro Series 4600 A2 Laminator	22	340058P	Copy Shop	6	400	500	✓	✓	
GBC Foton 30 AutoFeed Laminator	20	342010	Office						
GBC Foton 30 Cartridge A4 150mic (Refillable)	20	342016	Office						
GBC Foton 30 Cartridge A4 250mic (Refillable)	20	342021	Office						
New GBC Ultima 35 Ezload Laminator	22	340060	Large Office						
GBC Ultima 65 Laminator	22	340062	Large Office						

What documents do you want to protect?

Product	Document Pouch	Matt Pouch	Card Pouch
Reference materials	✓	✓	✓
Everyday items	✓	✓	
Labelling and for ID/Security	✓		✓
Signage		✓	
For outside use		✓	

What thickness do you need?

Surface	Flexible	Rigid	Extra Rigid	Ultra Rigid
Pouch type	2x75mic (150mic total)	2x125mic (250mic total)	2x175mic (350mic total)	2x250mic (500mic total)
Limited use or handling	✓✓✓	✓		
Frequent reference use		✓✓✓	✓✓	
Training materials - medium to heavy usage		✓✓	✓✓✓	✓✓
Frequent handling & demonstration of quality e.g. restaurant menus		✓	✓✓	✓✓✓

Manual Release/Reverse	Intelligent Power Off	Touch Control	Accurate Feed Guide	Intelligent Status Alert	Intelligent Pouch Reverse	Interactive User Display	Interactive Pouch Select	Intuitive Menu Selection	Professional Controls	Laminator Model
-	-	-	-	-	-	-	-	-	-	Rexel Style A4 Laminator
-	-	-	-	-	-	-	-	-	-	Rexel Style A3 Laminator
-	-	-	-	-	-	-	-	-	-	GBC Inspire + A4 Laminator
-	-	-	-	-	-	-	-	-	-	GBC Inspire + A3 Laminator
-	-	-	-	-	-	-	-	-	-	GBC Fusion 1000L A4 Laminator
-	-	-	-	-	-	-	-	-	-	GBC Fusion 1000L A3 Laminator
✓	✓	-	-	-	-	-	-	-	-	GBC Fusion 1100L A4 Laminator
✓	✓	-	-	-	-	-	-	-	-	GBC Fusion 1100L A3 Laminator
✓	✓	✓	✓	✓	-	-	-	-	-	GBC Fusion 3000L A4 Laminator
✓	✓	✓	✓	✓	-	-	-	-	-	GBC Fusion 3000L A3 Laminator
✓	✓	✓	✓	✓	-	-	-	-	-	GBC Fusion 3100L A3 Laminator
-	-	-	-	-	-	-	-	-	-	Academy+ A3 Laminator
✓	✓	✓	✓	✓	✓	✓	✓	-	-	GBC Fusion 6000L A3 Laminator
✓	✓	✓	✓	✓	✓	✓	✓	✓	✓	GBC Fusion 7000L A3 Laminator
✓	✓	-	-	-	-	-	-	-	-	Leitz iLam Touch 2 A3 Laminator - 6 Roller
✓	✓	-	-	-	-	-	-	-	-	Leitz iLam Touch Turbo 2 A3 Laminator - 6 Roller
✓	✓	-	-	-	-	-	-	-	-	Leitz iLam Touch Turbo Pro A3 Laminator - 6 Roller
										GBC 4000LM A2 Laminator
										GBC Pro Series 3600 A3 Laminator
										GBC Pro Series 4600 A2 Laminator
										GBC Foton 30 AutoFeed Laminator
										GBC Foton 30 Cartridge A4 150mic
										GBC Foton 30 Cartridge A4 250mic
										New GBC Ultima 35 Ezload Laminator
										GBC Ultima 65 Laminator

- SHREDDING
- LAMINATING
- BINDING
- STAPLING
- PUNCHING
- SUNDRIES
- PAPER & BOARD
- STORAGE
- ERGONOMICS
- GUILLOTINES
- VISUAL COMMUNICATION

## Work from anywhere – **WITH CONFIDENCE**

It's about having the right products available to produce professional results regardless of where you work

Perfect finishes with GBC.



SHREDDING

LAMINATING

BINDING

STAPLING

PUNCHING

SUNDRIES

PAPER & BOARD

STORAGE

ERGONOMICS

GUILLOTINES

VISUAL COMMUNICATION

## GBC Foton 30 Automatic Laminator

- Automatically laminate up to 30x documents at a time
- Auto feed paper alignment technology
- Manual mode for laminating odd shapes and sizes
- Intuitive control panel for easy switching between automatic and manual mode
- Low film indicator light



**AUTO FEED** **30 Sheets** **A3** **A4**



Rexel Code	On Pack Code	Description
342010	4410011	Foton 30 Automatic Laminator

## GBC Foton Film Cartridge

- Easy load gloss film cartridge
- 150 micron laminates up to 250x A4 sheets
- 250 micron laminates up to 150x A4 sheets

### NEW Refillable Film Cartridges

Foton 30 is now even more productive with easy load refillable cartridges which reduce costs and improve efficiency.

Each refillable cartridge is provided with a lamination roll. To refill: simply remove empty cartridge, open the cartridge levers, insert a replacement roll and close the levers.



Rexel Code	On Pack Code	Description
342016	4410023	GBC Foton 30 Refillable Film Cartridge 150 micron Gloss (56.4 Metres laminates 150 pages)
342017	4410026	GBC Foton 30 Film Cartridge 150 micron Gloss (56.4 Metres laminates 150 pages)
342021	4410025	GBC Foton 30 Refillable Film Cartridge 250 micron Gloss (34.4 Metres laminates 150 pages)
342022	4410028	GBC Foton 30 Film Cartridge 250 micron Gloss (34.4 Metres laminates 150 pages)



## Large Office - Frequent Use

### Leitz iLAM Touch A3 7474

344040 (74744000)

- Maximum Micron Pouch: 500 micron
- Speed mm/min: 1000
- Warm up time: 1 min
- Max laminating width: 320mm
- 6 Rollers



### Leitz iLAM Touch Turbo A3 7520

344045 (75200000)

- For intensive professional use
- With unique easy feed system
- Maximum Micron Pouch: 500 micron
- Speed mm/min: 1500
- Warm up time: 1 min
- Max laminating width: 320mm
- 6 Rollers



### Leitz iLAM Touch Turbo Pro A3 7519

344050 (75190000)

- Maximum Micron Pouch: 500 micron
- Speed mm/min: 2000
- Warm up time: 1 min
- Max laminating width: 320mm
- 6 Rollers



## Office - High & Medium Volume Use

### GBC Fusion™ 7000L A3

Excellence Accelerated

Ideal 6 roller machine for heavy use or office with regular laminating requirements.

- Automatic self set for any pouch thickness up to 2 x 250 micron (500mic in total)
- Warms up in 1 minute and laminates an A3 document in less than 13 seconds using a 150 micron pouch
- Next generation intelligent input sensors automatically adjust speed for a flawless finish
- Intelligent auto reverse prevents pouch misfeeds or jams



### GBC Fusion™ 6000L A3

Excellence Accelerated

Ideal machine for heavy use or office with regular laminating requirements.

- Automatic self set for any pouch thickness up to 2 x 250 micron (500mic in total)
- Warms up in 1 minute and laminates an A4 document with a 150 micron pouch in just 15 seconds
- Next generation intelligent input sensors automatically adjust speed for a flawless finish
- Intelligent auto reverse prevents pouch misfeeds or jams



### GBC Fusion™ 3100L A3

Excellence Accelerated

Ideal machine for regular use or mid size office with moderate laminating requirements.

- Use with flexible 2 x 75micron (150 mic in total) up to extra rigid 2 x 175micron (350 mic in total) pouches
- Warms up in 1 minute and laminates an A4 document with a 150 micron pouch in just 21 seconds



## Small Office - Low Volume Use

### GBC Fusion™ 3000L A3 & A4

Right first time, in half the time.

Ideal machine for small office users with moderate laminating requirements.

- Use with up to 2 x 125 micron (250 micron in total)
- Warms up in 1 minute and laminates an A4 document with a 2 x 75 micron (150mic in total) pouch in just 15 seconds
- Available in A3 and A4 versions



### GBC Fusion™ 1100L A3 & A4

Lamination doesn't get any simpler.

Great for the home or small office with low usage requirements.

- Use with up to 2 x 125 micron pouches (250 mic in total)
- Warms up in 3 minutes and laminates an A4 document with a 2 x 75 micron (150mic in total) pouch in less than a minute
- Available in A3 and A4 versions



### GBC Fusion™ 1000L A3 & A4

Lamination doesn't get any simpler.

Great for the home or small office with low usage requirements.

- Use with up to 2 x 75 micron pouches (150mic in total)
- Warms up in 4 minutes and laminates an A4 document with a 2 x 75 micron (150mic in total) pouch in less than a minute
- Available in A3 and A4 versions



Model	T/Turbo Pro A3	T Turbo A3	Touch A3	7000L A3	6000L A3	3100L A3	3000L A3	3000L A4	1100L A3	1100L A4	1000L A3	1000L A4
Rexel Code	344050	344045	344040	340052	340047	340041	340037	340027	340016	340011	340008	340007
On Pack Code	75190000	75200000	74744000	4402133EU	4402134EU	44000750SA	44000749SA	44000748SA	44000747SA	44000746SA	44000745SA	44000744SA
Lam Width	Max (324mm)	Max (324mm)	Max (324mm)	Max (324mm)	Max (324mm)	Max (324mm)	Max (324mm)	Max (241mm)	Max (324mm)	Max (241mm)	Max (324mm)	Max (241mm)



# Document Protection Solutions: Laminators

SHREDDING

LAMINATING

BINDING

STAPLING

PUNCHING

SUNDRIES

PAPER & BOARD

STORAGE

ERGONOMICS

GUILLOTINES

VISUAL COMMUNICATION

## Specialist - School / College Use

### A3 Academy+ Education

A3 Academy Education Laminator is a robust machine specially designed for schools and colleges. Use a carrier to laminate all kinds of different materials.

- Elegant modern design
- Auto reverse to prevent paper jams



## Home - Personal Use

### Rexel Style A4 & A3

Ideal home or personal use laminator at a great price

- Hot and Cold settings
- Easily remove misfed pouches
- Easy one switch startup
- Use with flexible 2 x 125mic (250 in total) pouches



### GBC Inspire + A4 & A3

Great entry level laminator for home or personal use.

Simple to use, no previous experience or user manual required.

- Easy one step lamination – just turn it on
- Use with flexible 2 x 75mic (150mic in total) pouches



## Copy Shop - High Volume Use

### GBC Pro Series 3600 A3

- Maximum Micron Pouch: 500 micron
- Speed mm/min: 1400
- Approx. Lamination time (A4): 22 sec
- Warm up time: 6 min
- Max laminating width: 325mm
- Temperature and speed control
- 6 Roller



### GBC Pro Series 4600 A2

- Maximum Micron Pouch: 500 micron
- Speed mm/min: 1400
- Approx. Lamination time (A4): 10 sec
- Warm up time: 6 min
- Max laminating width: 480mm
- Temperature and speed control
- 6 Roller



### GBC H4000LM A2

- Maximum Micron Pouch: 500 micron
- Speed mm/min: 470
- Approx. Lamination time (A4): 18 sec
- Variable temperature and constant speed
- 5 preset temperature settings



## Roll Laminators

### GBC Rollseal Ultima 35 EzeLoad A3

- Maximum Micron Pouch: 500 micron
- Speed mm/min: 1000
- Approx. Lamination time (A4): 15 sec
- Variable temperature control
- Approx. 4 x faster lamination process than with traditional office pouch laminators
- Impossible to load films in error
- Laminates all formats up to 305mm width
- Warm up time: 90sec



A3

### GBC Ultima 65 Roll A1

With the Ultima 65 laminator, it's easy to protect and preserve your most important printed tools. The EZload film system makes loading fool-proof, while the pivoting feed table provides easy access for film changing. AutoGrip shafts make adding and removing standard film a breeze.

- Max film width: 681mm
- Warm-up time: 20 minutes
- Speed: 600-3000mm/min
- Max doc thickness: 3 mm
- Warm up time: 90sec



A1

Model	Academy +	Style A3	Style A4	Inspire + A3	Inspire + A4	Pro Series 3600 A3	Pro Series 4600 A2	H4000LM A2	Ultima 35	Ultima 65
Rexel Code	340042	340002	340001	340004	340003	340056P	340058P	340057	340060	340062
On Pack Code	4410010	2104514EU	2104513EU	4402076EU	4402075EU	1703600	1704600	IB509551	4410020	1712000
Lam. Width	Max (241mm)	Max (324mm)	A4 Max (241mm)	Max (324mm)	Max (241mm)	Max (325mm)	Max (480mm)	Max (480mm)	Max (324mm)	Max (681mm)



Product	Machine Setting	Box	Rexel Code	On Pack Code
<b>GLOSS A2</b>				
A2 Premium	150	100	340100	IB589782
<b>GLOSS A3</b>				
A3 Premium	150	100	330010	3200745
A3 Premium	250	100	330014	3200725
<b>GLOSS A4</b>				
A4 Premium	150	100	330020	3740400
A4 Premium	150	10	330023	4400729
A4 Premium	250	100	330024	3700723
A4 Premium	350	100	340165	3200724
A4 Premium	500	50	340170	3740449
<b>GLOSS A5</b>				
A5 Premium	150	100	330039	3740451
A5 Premium	250	100	330041	3200749
<b>GLOSS A6</b>				
A6 Premium	150	100	340205	3743152
A6 Premium	250	100	340210	3740442
<b>GLOSS A7</b>				
A7 Premium	125	100	340230	IB581076
<b>PREMIUM MATT</b>				
A4 Premium	150	100	340300	3747240
<b>IBM CARD POUCHES</b>				
IBM 60x83	250	100	340350	3740426
<b>CREDIT CARD</b>				
Credit Card 54x86	250	100	340360	3740300
Credit Card 54x86	500	100	340365	3740430
<b>BUSINESS CARD</b>				
Bus Card 60x90	250	100	340370	3743157

Product	Machine Setting	Box	Rexel Code	On Pack Code
<b>GOVERNMENT POUCHES</b>				
Government 65x95	250	100	340380	3740301
Government 65x95	500	100	340390	3740432
<b>BADGE</b>				
Badge 67x98.5	250	100	340400	3743177
Badge 67x98.5	360	50	330036	41611E
<b>JUMBO POUCHES</b>				
Jumbo 75x105	250	100	340422	3740303
<b>HAND SLOT PUNCHES</b>				
Hand Slot Punch		1	330044	
<b>GLOSS A1 ROLLS</b>				
635mm Width (2 Rolls) A1	150	2	340545	3400929
<b>NAP-LAM 2 ROLL FILM A0, A0+ GLOSS</b>				
1000mm Gloss (1 Roll) A0	75	1	340551	4401829
<b>CARRIERS</b>				
A3 Carriers		5	340645	EK03000
A4 Carriers		5	340650	EK04000
<b>ID ACCESSORIES</b>				
Badge Clip P/strap	Met	100	340705	
<b>GBC BASICS GLOSS A3 &amp; A4</b>				
A3 Light	150	100	340801	2103831
A3 Standard	250	100	340806	2103833
A4 Light	150	100	340811	2103828
A4 Standard	250	100	340816	2103830

## Roll Film



Ultima 35				
CoreSize 25.4mm	Combined Micron	Roll width x Roll length	Rexel Code	On Pack Code
Ez Gloss (2 Rolls)	85	305mm x 150m	340450	3400919EZ
Ez Gloss (2 Rolls)	150	305mm x 75m	340460	3400927EZ
Ez Gloss (2 Rolls)	250	305mm x 60m	340475	3400931EZ

Ultima 65				
Gloss - CoreSize 25.4mm	Combined Micron	Roll width x Roll length	Rexel Code	On Pack Code
635mm Width (2 rolls) A1	150	635mm x 75m	340068	5500554

Gloss - CoreSize 25mm				
Combined Micron	Roll width x Roll length	Rexel Code	On Pack Code	
750	635x60m	340935		
125	635x60m	340960		

SHREDDING  
LAMINATING  
BINDING  
STAPLING  
PUNCHING  
SUNDRIES  
PAPER & BOARD  
STORAGE  
ERGONOMICS  
GUILLOTINES  
VISUAL COMMUNICATION



# Document Binding Solutions: Selector Guide

SHREDDING  
LAMINATING  
BINDING  
STAPLING  
PUNCHING  
SUNDRIES  
PAPER & BOARD  
STORAGE  
ERGONOMICS  
GUILLOTINES  
VISUAL COMMUNICATION

Binder Model	Page	Rexel Code	User / Usage	Max Document Size	Punch Capacity (Sheets)	Bind Capacity (Sheets)	Electric Punch	Tray Full Indicator	Jam Detect & Reverse	Low Force Manual Punch
CombBind C100	28	320019	Personal - Light Use	A4	9	160				✓
CombBind C110	28	320022	Personal - Light Use	A4	12	195				✓
CombBind C200	28	320042	Personal & Shared - Moderate Use	A4	20	330				✓
CombBind C200E	28	320035	Personal & Shared - Moderate Use	A4	15	330	✓	✓	✓	
CombBind C210	27	320051	Personal & Shared - Moderate Use	A4	25	450				✓
CombBind C210E	27	320045	Personal & Shared - Moderate Use	A4	20	450	✓		✓	
CombBind C340	27	320050	Shared - Frequent Use	A4	25	450				✓
CombBind C450E	27	320055	Shared - Frequent Use	A4	25	450	✓	✓	✓	
CombBind C366	27	310014	Shared - Frequent Use	A4	30	450				✓
CombBind C366E	27	310012	Shared - Frequent Use	A4	30	450	✓	✓	✓	
CombBind C150Pro	27	320200		A4	20	450				
CombBind C250Pro	27	320210		A4	20	450				
CombBind C800Pro	27	320220		A4	20	450	✓			
WireBind W15	29	320060		A4	15	125				
WireBind W20	29	320065		A4	20	125				
WireBind W25E	29	320070		A4	25	125	✓			
ClickBind 150	29	320075		A4			✓			
Clickman	29	320073		A4						
Velobinder	29	320090		A4						
MultiBind 208	28	320112		A4						
MultiBind 230	28	320120		A4						
MultiBind 230E	28	320125		A4			✓			
ThermaBind T200	29	320130		A4						
ThermaBind T400	29	320135		A4						

## Consumables

34 Loop ClickBind	Binds	Box	Black		White		Frost Clear		Blue	
			Rexel Code	On Pack Code	Rexel Code	On Pack Code	Rexel Code	On Pack Code		
8mm ClickBind Spines	45	50	320300	388019E	320302	388002E	320306	387302E		
12mm ClickBind Spines	95	50	320316	388064E	320318	388057E	320322	387319E		
16mm ClickBind Spines	145	50	320332	387357E	320334	387340E	320338	387326E		
VeloBind Strips 4 Prong	Binds	Box	Black		White		Red		Blue	
45mm VeloBind Strips	200	25	320398	9741635	320400	9741639	320404	9741640	320402	9741636
Covers A4 Silk White	Binds	Box			White (25)		White (50)		White (100)	
1.5mm ThermaBind Cvr	15	25			312410				312411 IB370014	
3mm ThermaBind Cvr	30	25			312412				312413 IB370021	
6mm ThermaBind Cvr	50	25			312414				312415 IB370045	
12mm ThermaBind Cvr	110	25			312416				312417 IB370175	
15mm ThermaBind Cvr	140	50					312419B	IB370083		
20mm ThermaBind Cvr	190	50					312420B	IB370090		
25mm ThermaBind Cvr	240	50					312421B	IB370106		
30mm ThermaBind Cvr	290	50					312422B	IB370113		
35mm ThermaBind Cvr	340	50					312423B	IB370120		
50mm ThermaBind Cvr	490	50					312424B	IB370151		
21 Loop WireBind	Binds	Box	Rexel Code	On Pack	Rexel Code	On Pack	Rexel Code	On Pack		
			Black		White		Silver			
6mm WireBind 21 Loop	45	100	312801	IB165023	312802	IB165085	312803	IB160431		
8mm WireBind 21 Loop	60	100	312813	IB165122	312814	IB165184	312816	IB160639		
10mm WireBind 21 Loop	75	100	312821	IB165321	312822	IB165283	312823	IB160837		
12.5mm WireBind 21 Loop	105	100	312819	IB165320	312818	IB165382	312817	IB161230		
14mm WireBind 21 Loop	120	100	312825	IB165429	312826	IB165481	312827	IB161438		

# Document Binding Solutions: Selector Guide



Continuous Punch & Bind	Edge Alignment Guide	ZipComb™ Compatible	Quickstep™ WorkFlow	Document Measure Guide	Intelligent™ Comb Opener	Intelligent™ Paper Count	Accurate Punch Centering	Intelligent™ Margin Control	Professional A5 Punch Adjust	Binder Model
✓	✓	✓								CombBind C100
✓	✓	✓	✓	✓						CombBind C110
✓	✓	✓	✓	✓	✓					CombBind C200
✓	✓	✓	✓	✓	✓					CombBind C200E
✓	✓	✓	✓	✓	✓	✓				CombBind C210
✓	✓	✓	✓	✓	✓	✓				CombBind C210E
✓	✓	✓	✓	✓	✓	✓	✓			CombBind C340
✓	✓	✓	✓	✓	✓	✓	✓			CombBind C450E
✓	✓	✓	✓	✓	✓	✓	✓	✓	✓	CombBind C366
✓	✓	✓	✓	✓	✓	✓	✓	✓	✓	CombBind C366E
										CombBind C150Pro
				✓				✓		CombBind C250Pro
										CombBind C800Pro
			✓	✓						WireBind W15
			✓	✓		✓	✓			WireBind W20
			✓	✓		✓	✓			WireBind W25E
			✓	✓						150
										Clickman
										Velobinder

Plastic Combs	Binds	Box	Black	White	Red	Blue
6mm CombBind 21 Loop	25	100	3101BK	3101WH	3101RD	3101BU
8mm CombBind 21 Loop	45	100	3100BK	3100WH	3100RD	3100BU
10mm CombBind 21 Loop	65	100	3102BK	3102WH	3102RD	3102BU
12mm CombBind 21 Loop	95	100	3103BK	3103WH	3103RD	3103BU
14mm CombBind 21 Loop	125	100	310401	310405	310404	310402
16mm CombBind 21 Loop	145	100	3104BK	3104WH	3104RD	3104BU
19mm CombBind 21 Loop	165	100	3105BK	3105WH	3105RD	3105BU
22mm CombBind 21 Loop	195	100	310600BK	310600WH	310600RD	310600BU
25mm CombBind 21 Loop	225	50	3106BK	3106WH	3106RD	3106BU
28mm CombBind 21 Loop	240	50	310605BK	310605WH		
32mm CombBind 21 Loop	280	50	310601	310604		
38mm CombBind 21 Loop	330	50	3107BK	3107WH		
45mm CombBind 21 Loop	390	50	310701	310704		
51mm CombBind 21 Loop	450	50	3108BK	3108WH		

34 Loop WireBind	Binds	Box	Black	White	Silver
6mm WireBind 34 Loop	55	100	311601BK	311601WH	311601SI
8mm WireBind 34 Loop	70	100	3117BK	3117WH	3117SI
9.5mm WireBind 34 Loop	85	100	311701BK	311701WH	311701SI
11mm WireBind 34 Loop	100	100	3118BK	3118WH	3118SI
12.5mm WireBind 34 Loop	115	100	311801BK	311801WH	311801SI
14mm WireBind 34 Loop	125	100	3119BK	3119WH	3119SI



# Document Binding Solutions: Binding Style & Cover Choice

Binding a document says something about you - whether it's that all important sales proposal for a customer, a securely bound legal document, or a regularly used training document. Select from the GBC range of binding styles and covers to make sure it represents you. You only get one chance to make a first impression!

Which binding style?



## CombBind®

The classic way to bind.

- 21 hole punch pattern allows you to select spines from GBC, standard combs
- All comb styles are great for photocopying and page turning
- CombBind elements are available in sizes 6mm to 51mm



## WireBind

The professional way to bind.

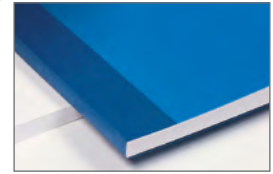
- Durable, robust metal wire spines with either 34 or 21 loops (designed for use on Multifunctional binders)
- Providing a secure binding wire with 360 degree turning capability - perfect if photocopying is required
- Ideal for documents which require a secure, non-editable closure
- WireBind elements are available in sizes 6mm to 14mm



## ClickBind™

The simple and editable way to bind.

- Click provides a modern finish to any document with the added benefit of easy page addition or removal when required
- Maximum impression with minimal effort
- Click provides 360 degree turning and is ideal for photocopying
- ClickBind elements are available in sizes 8mm to 16mm



## ThermaBind™

The "Published Look" way to bind.

- Pages are held in place with adhesive inside the spine of the covers
- Front and back covers are supplied as one item - unique for ThermaBind
- Flat stack multiple copies and ideal for mailing

Ideal for creating

Document	CombBind®	WireBind	ClickBind™	ThermaBind™
Training Materials	✓✓✓	✓✓	✓	-
Reference Documents	✓✓✓	✓✓	✓	-
Marketing Strategies	-	✓✓	✓✓✓	-
Sales Offers	-	✓✓	✓✓✓	-
Annual Reports	-	✓	-	✓✓✓
Legal Documents	-	✓	-	✓✓
<b>Front Cover</b>				
Clear™/Frosted	✓	✓	✓	✓

Covers A4 Clear	Pack	Rexel Code Clear	On Pack Code Clear	Green	Yellow	Red	Blue
Clear Covers Basic A4	100	312298	4401983				
Clear Covers 180Mic A4	100	312299	4401984				
Clear Covers 180Mic A3	100	312342					
Clear Covers 200Mic	100	312303	CE012080E				
Covers A4 Frosted	Pack	Clear		Green	Yellow	Red	Blue
Frosted Covers 180Mic	100	312320		312324	312326	312325	312323
Frosted Covers 180Mic	10	312321					
Leather Grain Board A4 (50)	Pack	Gsm		Black	White	Red	Blue
Basics LeatherGrain Covers	50	210gsm		3122BK	3122WH	3122RD	3122BU
A4 SlideBinders	Binds	Box		Black	White	Red	Blue
5mm SlideBind Box 25	35	25		3125BK	3125WH		3125BU
7mm SlideBind Box 25	50	25		3126BK			
10mm SlideBind Box 25	70	25		3127BK			

## Office - High Volume Use

### GBC CombBind® C800Pro

Binds up to 450 sheets and punches 20 A4 sheets in one go. A semi professional machine, combining electric punching with manual binding for high volume, shared use.

- Foot pedal for optional hands free punching
- 21 selector pin and adjustable margin depth offer flexibility to bind various formats
- Robust aluminium construction for a greater durability
- High volume clippings tray



### GBC CombBind® C250Pro

Binds up to 450 sheets and punches 20 A4 sheets in one go. Ideal for high volume, shared use.

- 21 selector pin and adjustable margin depth offer flexibility to bind various formats
- Robust aluminium construction for a greater durability



### GBC CombBind® C150Pro

Binds up to 450 sheets and punches 20 A4 sheets in one go. Ideal for high volume, shared use.

- Robust aluminium construction for a greater durability



## Office - Frequent / Moderate Use

### GBC CombBind® C366E

#### GBC CombBind® C366

Binds up to 450 sheets and electrically or manually punches 30 A4 sheets in one go. Ideal for high volume, shared use.

- Unique comb opener sets margin and prevents combs from over opening
- Unique Paper Separator: divides your pages into stacks of 30 to maximise punch efficiency



### GBC CombBind® C450E

#### GBC CombBind® C340

Binds up to 450 sheets and electrically or manually punches 25 A4 sheets in one go. Ideal for high volume, shared use.

- Heavy use intelligent paper count
- Divides your pages into stacks of 25 to maximise punch efficiency



### GBC CombBind® C210E

Binds up to 450 sheets and electrically punches 20 A4 sheets in one go. Ideal for medium volume, shared use.

- Unique gravity fed electric paper punch makes binding documents easier and faster than ever

#### GBC CombBind® C210

Binds up to 450 sheets and punches 25 A4 sheets in one go. Ideal for medium volume, shared use.

- Full width handle and gravity fed low force technology make document punching smooth and effortless



Model	C800Pro	C250Pro	C150Pro	C366E	C366	C450E	C340	C210E	C210
Rexel Code	320220	320210	320200	310012	310014	320055	320050	320045	320051
On Pack Code	IB271717	IB271403	IB271106	2101444	2101434	4400421SA	4400420	4401926EU	4401846
Bind Capacity	450	450	450	450	450	450	450	450	450
Punch Capacity	20	20	20	30	30	25	25	20	25



# Document Binding Solutions: Comb & MultiBind Binders

## Office/Personal - Moderate - Light Use

### GBC CombBind® C200E

Binds up to 330 sheets and electrically punches 15 A4 sheets in one go. Ideal for medium volume, shared use.

- Featuring unique easy view punch alignment indicators to ensure accurate punching every time



### GBC CombBind® C200

Binds up to 330 sheets and punches 20 A4 sheets in one go. Ideal for medium volume, shared use.

- Full width handle and the unique EasyView™ punch alignment indicators make document punching effortless and accurate every time



### GBC CombBind® C110

Binds up to 195 sheets and punches 12 A4 sheets in one go. Ideal for low volume, personal use.

- Occasional use - compact
- Colour coded document size guide for simple selection of the correct comb size
- Light weight



### GBC CombBind® C100

Binds up to 160 sheets and punches 9 A4 sheets in one go. Ideal for low volume, personal use.

- Low force punch makes preparing your documents easy



## Office/Personal - MultiBind = Comb + Wire

### GBC MultiBind 230

Binds up to 450 sheets depending on the binding style and electrically or manually punches up to 30 sheets in one go. Ideal for regular office use.

- 2 styles from one machine - create comb or 21 loop wire bound A4/A5 documents
- Full width punch handle for extra power



### GBC MultiBind 230E

Binds up to 450 sheets depending on the binding style and electrically or manually punches up to 30 sheets in one go. Ideal for regular office use.

- 2 styles from one machine - create comb or 21 loop wire bound A4/A5 documents
- Full width punch handle for extra power



### GBC MultiBind 208

Binds up to 125 sheets and punches up to 8 sheets in one go. Ideal for occasional, small office or personal use.

- 2 styles from one machine - create comb or 21 loop wire bound documents
- Lightweight desktop design



Model	C200E	C200	C110	C100	230	230E	208
Rexel Code	320035	320042	320022	320019	320120	320125	320112
On Pack Code	7101046EU	4401845	4401844	4401843	4400423SA	4400424SA	4400110
Bind Capacity	330	330	195	160	450	450	125
Punch Capacity	15	20	12	9	30	30	8

## Office/Personal - High - Light Use

### GBC WireBind W25E

Binds up to 125 sheets and electrically punches 25 A4 sheets in one go. Ideal for heavy duty, large office use.

- Includes document separating, auto centring, wire closure control and a foot pedal option
- Solid construction for a greater durability



### GBC WireBind W20

Binds up to 125 sheets and punches 20 A4 sheets in one go. Ideal for frequent, large office use.

- Includes document separating, auto centring and wire closure control
- Solid construction for a greater durability



### GBC WireBind W15

Binds up to 125 sheets and punches 15 A4 sheets in one go. Ideal for moderate, small office or desktop use.

- Carry handle for portable binding



## Office/Personal - Moderate - Light Use

### GBC ClickBind™ 150

Binds up to 145 sheets and punches 15 sheets in one go. Ideal for moderate use.

- Unique to GBC, the click binding style enables to edit documents when required
- Featuring punch alignment indicators and low force technology to ensure accurate and effortless punching every time



### GBC ClickMan

Binds up to 145 sheets and punches 6 A4 sheets in one go. Ideal for personal use.

- Unique to GBC, the click binding style enables to edit documents when required
- Just insert the pages and slide the bar to perforate them



### GBC StripBind VeloBinder

- Full Width Punch Handle: Smooth punching across full A4 paper length
- Side Guide: Easy paper alignment for accurate hole spacing
- Metal construction with rubber base/Chip Tray
- Punch Capacity: 20 Sheets (80gsm)
- Binds up to 200 Sheets (80gsm)



## Office - ThermaBind

# GBC ThermaBind® Quick and Easy Permanent Binding

### GBC ThermaBind® T400 GBC ThermaBind® T200

Binds up to 400 sheets in a single document using 40mm covers or multiple smaller ones simultaneously. Ideal for frequent, large office use.

- Auto and visual cycle complete signals
- Adjustable heat settings and a variable timer



Model	W25E	W20	W15	ClickBind 150	ClickMan	Velobinder	T200	T400
Rexel Code	320070	320065	320060	320075	320073	320090	320130	320135
On Pack Code	4400427SA	4400426SA	4400402	4401929	CA610000	9707121	4400409	4400411
Punch Capacity	25	20	15	15	6	20		
Bind Capacity	125	125	125	145	145	200	200	400

SHREDDING

LAMINATING

BINDING

STAPLING

PUNCHING

SUNDRIES

PAPER & BOARD

STORAGE

ERGONOMICS

GUILLOTINES

VISUAL  
COMMUNICATION

### Rexel Juno 105 – Half Strip

- Compact plastic clad stapler
- Built in staple remover
- Box 10
- Carton 60



Colour	Rexel Code	On Pack Code
Black ●	010112 BK	2100602
Blue ●	010112 BU	2100603
Red ●	010112 RD	2100604



### Rexel Gemini – Half Strip

- Compact and lightweight stapler for stapling up to 15 sheets of paper (80 gsm)
- Ergonomic, plastic body for comfortable use
- Rotating anvil allows for pinning, tacking and permanent stapling
- Compatible with Rexel No. 56 (26/6) and No. 16 (24/6) staples
- Top loading refill mechanism
- Box 12
- Carton 72



Colour	Rexel Code	On Pack Code
Black ●	010109 BK	2104107
Blue ●	010109 BU	2104107B



### Rexel Gazelle – Half Strip

- Strong, metal stapler for stapling up to 20 sheets of paper (80 gsm)
- Ergonomic grip to ensure accurate and comfortable stapling
- Innovative StapleScope indicator shows how many staples are left
- Can be stored vertically or horizontally
- Uses with No. 56 (26/6) and No. 16 (24/6) staples
- Top loading refill mechanism making it quick and easy to refill staples
- Colour matches the Premium Punch Range
- Carton 10



Colour	Rexel Code	On Pack Code
Black/Black ●	010105 KK	2100010
Silver/Blue ●	010105 SB	2100011
Silver/Black ●	010105 SK	2100790



### Rexel Juno 210 – Full Strip

- Economical plastic clad stapler
- Built in staple remover
- Dimensions (W x H x D mm): 64 x 38 x 182
- Weight: 0.22kg
- Box 10
- Carton 40



Colour	Rexel Code	On Pack Code
Black ●	010021 BK	92294
Blue ●	010021 BU	2100190
Red ●	010021 RD	2100189



### Rexel Sirius – Full Strip

- Lightweight, full strip stapler for stapling up to 15 sheets of paper (80gsm)
- Ergonomic design to ensure accurate and comfortable stapling
- Rotating anvil to allow permanent stapling and pinning for temporary stapling
- Compatible with Rexel No. 56 (26/6) and No. 16 (24/6) staples
- Top loading refill mechanism with refill indicator
- Box 12
- Carton 72



Colour	Rexel Code	On Pack Code
Black ●	010019 BK	2104043
Blue ●	010019 BU	2104043B



### Rexel Taurus – Full Strip

- Lightweight, full strip premium stapler for stapling up to 25 sheets of paper (80gsm)
- Ergonomic design to ensure accurate and comfortable stapling
- Enhanced anti-jam mechanism ensuring perfect stapling every time
- Built in staple remover to easily remove staples and minimise damage to documents
- Staples up to 20 sheets using Rexel No. 56 (26/6) or up to 25 sheets with No. 16 staples (24/6).
- Top loading refill mechanism with refill indicator
- Carton 10



Colour	Rexel Code	On Pack Code
Black ●	010006 BK	2100004
Blue ●	010006 BU	2100005





## ReXel Standard 100 – Half Strip

- Robust half strip stapler with an all metal construction
- Rubber base pad prevents skidding and marking
- Loads Rexel No 16 or No 56 Staples
- Maximum sheet capacity: 20
- Box 10
- Carton 40

Colour	Rexel Code	On Pack Code
Black ●	010111 BK	06503BK
Blue ●	010111 BU	06503BU
Red ●	010111 RD	06503RD



## ReXel Standard 200 – Full Strip

- Robust full strip stapler with an all metal construction
- Rubber base pad prevents skidding and marking
- Loads Rexel No 16 or No 56 Staples
- Box 10
- Carton 40

Colour	Rexel Code	On Pack Code
Black ●	010020	06512
Blue ●	010020 BU	06512BU
Red ●	010020 RD	06512RD



## ReXel Meteor – Half Strip

- Compact, metal stapler for stapling up to 20 sheets of paper (80 gsm)
- Ergonomic grip to ensure accurate and comfortable stapling
- Staples 15 sheets with No. 56 (26/6) staples and up to 20 sheets with No. 16 (24/6) staples
- Top loading refill mechanism making it quick and easy to refill staples
- Pinning and tacking function for display boards or temporary stapling
- Features a 65mm paper insertion depth for flexible stapling
- Box 10
- Carton 40

Colour	Rexel Code	On Pack Code
Black ●	010108 BK	2100019
Blue ●	010108 BU	2100020



## ReXel Aquarius – Full Strip

- High quality, metal stapler for stapling up to 20 sheets of paper (80 gsm)
- Ergonomic design to ensure accurate and comfortable stapling
- Compatible with Rexel No. 56 (26/6) and No. 16 (24/6) staples
- Top loading refill mechanism making it quick and easy to refill staples
- Full strip design allows you to staple for longer between refills
- Made from strong metal with ABS plastic casing
- Box 10
- Carton 40

Colour	Rexel Code	On Pack Code
Black ●	010017 BK	2100016
Blue ●	010017 BU	2100017



## ReXel Torador – Full Strip

- Strong, metal office stapler for stapling up to 25 sheets of paper (80 gsm)
- Ergonomic grip for accurate and comfortable stapling
- Built in staple remover to easily remove staples and minimise damage to documents
- Compatible with Rexel No. 56 (26/6) and No. 16 (24/6) staples
- Top loading refill mechanism making it quick and easy to refill staples
- Box 4
- Carton 40

Colour	Rexel Code	On Pack Code
Black/Black ●	010010 KK	2101204
Silver/Blue ●	010010 SB	2101203
Silver/Black ●	010010 SK	2101202



SHREDDING

LAMINATING

BINDING

STAPLING

PUNCHING

SUNDRIES

PAPER & BOARD

STORAGE

ERGONOMICS

GUILLOTINES

VISUAL  
COMMUNICATION

SHREDDING

LAMINATING

BINDING

### Rexel X15 Half Strip Stapler

- Metal half strip stapler
- Staples up to 15 sheets
- Uses No. 56 staples
- Box 12
- Carton 72

Colour	Rexel Code	On Pack Code
Black	● 010110 BK	2104045
Blue	● 010110 BU	2104045B
Red	● 010110 RD	2104045R
Green	● 010110 GN	2104265
Pink	● 010110 PI	2104266
Purple	● 010110 PU	2104264

Colour match Value Punches Page 38



STAPLING

### Rexel Buddy Stapler

- Complete with 1 000 No. 56 staples
- Assorted colours as illustrated
- Integrated staple remover
- Box 10
- Carton 160



PUNCHING

Rexel Code	On Pack Code
010204	2100150

SUNDRIES

### Rexel Bambi Stapler

- Staples up to 10 sheets
- Complete with 1 500 Bambi staples
- Uses Bambi (No 25 staples)
- Integrated staple remover
- Box 10
- Carton 40



Colour	Rexel Code	On Pack Code
Black/Black	● 010202	2100154
Silver/Blue	● 010202	2100154
Silver/Black	● 010202	2100154
Blue/Black	● 010202	2100154



PAPER & BOARD

STORAGE

ERGONOMICS

### Rexel Extract - It Staple Remover

- Knife-type staple remover
- Integrated magnet to retain removed staples
- Stainless steel tip
- Box 20
- Carton 240

Rexel Code	On Pack Code
010710	03001



Ergonomic shape for comfort and easy use

GUILLOTINES

VISUAL COMMUNICATION

### Rexel Desktop Kit

- Desktop kit with all you need to organise and file your documents
- Includes a stapler, hole punch, staple extractor and staples
- Staple up to 15 sheets with Rexel No. 56 (26/6) and 20 sheets with No. 16 (24/6) staples
- Punch up to 8 sheets
- Staple extractor
- Comes with a pack of 1000 26/6 staple
- Carton 10



Colour	Rexel Code	On Pack Code
Black	● 010200	2100069

### Leitz Staple Extractor

- Quality extractor
- Soft feel handle insert for comfort
- Box 20
- Carton 200

Colour	Rexel Code	On Pack Code
Grey	010702	55900085



# Promote Workplace Wellness: Low Force Staplers



## Rexel Optima 40 Low Force Full Strip Stapler

- High performance flat clinch stapler for stapling up to 40 sheets (80 gsm paper)
- Low force technology delivers more power for up to 50% less effort
- Flat clinch stapling to reduce the size of paper stacks saving space in your files and binders
- Compatible with Optima 26/6 staples and comes with 1000 staples
- Top loading refill mechanism making it quick and easy to refill staples
- Jam free performance with compatible staples
- Features a 70mm paper insertion depth for flexible stapling
- Includes box of 1000 staples
- Carton 6

Use Optima No. 56 Staples  
050310

Rexel Code	On Pack Code
010115	2102357



## Rexel Optima 40 Compact Low Force Stapler

- High performance flat clinch stapler for stapling up to 40 sheets (80 gsm paper)
- Low force technology delivers more power for up to 50% less effort
- Flat clinch stapling to reduce the size of paper stacks saving space in your files and binders
- Compatible with Optima 26/6 staples and comes with 1000 staples
- Top loading refill mechanism making it quick and easy to refill staples
- Jam free performance with compatible staples
- Compact design and soft feel grip ideal for hand held use
- Features a 70mm paper insertion depth for flexible stapling
- Carton 6

Use Optima No. 56 Staples  
050310

Rexel Code	On Pack Code
010119	2103357



## Rexel Optima 70 Low Force Heavy Duty Stapler

- Strong heavy duty metal stapler for stapling up to 70 sheets of paper (80 gsm)
- Designed for stapling of medium to large documents
- Low force technology delivers more power for up to 50% less effort than traditional staplers
- Flat clinch stapling to reduce the size of paper stacks saving space in your files and binders
- Jam free technology for perfect stapling every time
- Compatible with Optima HD70 staples
- Easy to re-load staples with the push button mechanism
- Features a 68 mm paper insertion depth for flexible stapling
- Comes supplied with a pack of 500 Optima HD70 staples
- Carton 3

Rexel Code	On Pack Code
010116	2102359



## Leitz New NeXXt Softpress Stapler

Sturdy and reliable stapler for everyday use. The patented Softpress Technology allows you to press the stapler anywhere to take all the effort out of stapling for a smooth and easy stapling in-hand or on the desk. It requires up to 60% less effort than a Leitz standard stapler. Flat Clinch technology saves up to 40% file space. Patented Direct Impact Technology and Leitz Softpress staples ensure perfect stapling every time.

Colour	Rexel Code	On Pack Code
Black	010872	56030095
Blue	010874	56030035
Leitz Staples (S1)	050400	54970000



SHREDDING

LAMINATING

BINDING

STAPLING

PUNCHING

SUNDRIES

PAPER & BOARD

STORAGE

ERGONOMICS

GUILLOTINES

VISUAL COMMUNICATION

SHREDDING

LAMINATING

BINDING

STAPLING

PUNCHING

SUNDRIES

PAPER & BOARD

STORAGE

ERGONOMICS

GUILLOTINES

VISUAL  
COMMUNICATION

### Rexel Giant Stapler

- Heavy-duty quality stapler
- Robust office workhorse
- No. 66/14 staples - **100 Sheet** Capacity
- No. 66/11 staples - **70 Sheet** Capacity
- No. 66/8 staples - **40 Sheet** Capacity *see page 52*
- Carton 10

Rexel Code	On Pack Code
010408	02030



### Rexel Goliath Stapler

- Staples from **20 to 100 sheets**
- Durable, strong metal chassis under an attractive and comfortable to use plastic cover
- Easy jam release mechanism
- Adjustable throat depth up to 70mm
- No. 66/14 staples - **100 Sheet** Capacity
- No. 66/11 staples - **70 Sheet** Capacity
- No. 66/8 staples - **40 Sheet** Capacity *see page 52*
- Carton 6

Rexel Code	On Pack Code
010405	02041



### Rexel Mercury Stapler

- Stapling medium to large reports.
- Durable die-cast metal construction
  - Staples **20 to 120 sheets**
  - Less effort required to staple, due to the superior patented anti-lever action
  - Jam-release button
  - Staple up to 55mm from the edge of the paper
  - Includes Mercury staples – *see page 52*
  - Carton 2

Rexel Code	On Pack Code
010409	2100922



### Rexel Gladiator Stapler

- Staples from **20 to 160 sheets**
- Durable, strong metal chassis under an attractive and comfortable to use plastic cover
- Easy jam release mechanism
- Paper alignment guide allows throat depth to be adjusted to 70mm
- Staples: 23/8 to 23/20 – *see page 52*
- Carton 6

Rexel Code	On Pack Code
010410	2100591



### Rexel Apollo Stapler

- Ideal for busy large report processing areas.
- Staples from **20 to 180 sheets**
  - All metal die-cast construction, with rubber grip
  - Paper alignment guide allows throat to be adjusted to 65mm
  - Easy jam release mechanism
  - Staples: 23/8 to 23/24 – *see page 52*
  - Carton 4

Rexel Code	On Pack Code
010411	2100921



### Rexel Odyssey Stapler

- For small to medium sized reports and personal filing.
- Convenience of a single staple size for **2 to 60 sheets**
  - Increased leverage reduces effort by 30% compared to other desktop staplers
  - Robust construction, made of die-cast metal, carries a 5-year guarantee
  - Staples: Odyssey – *see page 52*
  - Carton 6

Rexel Code	On Pack Code
010406	2100048E



### Leitz NeXXt Metal Longarm Stapler

- Sturdy metal stapler for stapling brochures. Robust and reliable.
- Staples up to 40 sheets of paper (80 gsm)
  - Effortless, accurate stapling with patented Direct Impact Technology
  - Uses staples: P3 (24/6or 26/6) for 2 to 30 sheets, P4 (24/8 or 26/8)



Rexel Code	On Pack Code
010403	55600095



### Swingline Heavy Duty Staple Remover

- Remove heavy duty staples with ease
- Removes staples from documents of up to **160 sheets**
- Stainless steel ergonomic design
- Carton 12



Rexel Code	On Pack Code
010711	37201



# Electric Staplers



## Rapid Optima Grip Electric Stapler

- Convenient plug-in or battery operation
- Built-in paper stack height gauge and staple placement guides
- Staples up to **20 sheets** with Optima premium staples
- Compact handheld design
- Box 1000 Optima 56 staples included



Use Optima 56 Staples  
050310

Rexel Code	On Pack Code
010215RA	2102349



## Rapid Optima 20 Electric Stapler

- Staples up to 20 sheets of paper (80 gsm)
- Convenient and effortless, fully automatic or manually controlled stapling
- Precisely positions staples with an integrated staple placement guide
- Jam-free stapling with Optima 56 staples, box of 1000 staples included
- Convenient mains socket or battery operation (6x AA batteries, not included)
- Hygienic stapling due to contactless no-touch use



Rexel Code	On Pack Code
010217RA	2102351



## Rapid Optima 45 Electric Stapler

- Flat clinch mechanism stacks paper neatly
- Handy Staple storage drawer
- LED low staple indicator alerts you to refill before running out
- Staples up to **45 sheets** with Optima premium staples
- Box 1000 Optima 56 staples & mains adapter included



Rexel Code	On Pack Code
010223RA	5001376



## Rapid Optima 70 Electric Stapler

- Staples up to 70 sheets of paper (80 gsm)
- Convenient and effortless, fully automatic or manual controlled stapling
- Reduces paper stacks by 30% with Flat Clinch technology
- Precisely positions staples with integrated and illuminated staple placement and manually adjustable alignment guides
- Jam-free stapling with Optima HD70 staples, box of 500 staples included
- Operated with power adaptor (included)
- Hygienic stapling due to contactless no-touch use



Rexel Code	On Pack Code
010222RA	2102355



## Rexel Stella 30 Electric Cartridge Stapler

- Unique staple cartridge which carries 5000 staples
- Compact size
- Staples up to **30 sheets**
- Suction cup feet for stability
- Adjustable depth gauge
- Uses mains adapter (supplied)



Rexel Code	On Pack Code
010218	2101197



Refill cartridge Rexel Code: 010219

## Rexel Stella 70 Electric Cartridge Stapler

- Unique staple cartridge which carries 5000 staples
- Staples up to **70 sheets**
- Suction cup feet
- Adjustable depth gauge
- Uses mains adapter (supplied)



Rexel Code	On Pack Code
010220	2101198



Refill cartridge Rexel Code: 010221

## Rexel Cartridge 06308 & 270

- Refill for Stella 30 Electric Stapler
- Refill for Stella 70 Electric Stapler



Rexel Code	On Pack Code	Refill for:
010219	06308	Stella 30
010221	06311	Stella 70



SHREDDING

LAMINATING

BINDING

STAPLING

PUNCHING

SUNDRIES

PAPER & BOARD

STORAGE

ERGONOMICS

GUILLOTINES

VISUAL COMMUNICATION

### Rexel R56 Metal Plier

- Strong metal stapling pliers for stapling up to 40 sheets of paper (80 gsm)
- Ergonomic grip to ensure accurate and comfortable stapling
- Compatible with Rexel No. 56 (26/6) and No. 16 (24/6) staples
- Staples up to 20 sheets of paper
- Rear loading refill mechanism making it quick and easy to refill staples
- Features a 55mm paper insertion depth for flexible stapling
- Box 6
- Carton 24



**Rexel Code** 010305 **On Pack Code** 2103700



### Rexel Office No. 56 Plier

- Strong metal stapling pliers for stapling up to 20 sheets of paper (80 gsm)
- Ergonomic grip to ensure accurate and comfortable stapling
- Compatible with Rexel No. 56 (26/6) and No. 16 (24/6) staples
- Top loading refill mechanism making it quick and easy to refill staples
- Features a 50mm paper insertion depth for flexible stapling
- For permanent stapling tasks
- Box 10
- Carton 40



**Rexel Code** 010304 **On Pack Code** 2600001



### Leitz 5549 Plier Back Loader

- Staples up to 40 sheets of paper (80 gsm)
- Traditional back loading functionality
- 70 mm insertion depth
- Adjustable anvil for stapling and pinning
- Uses P3 staples 24/6, 26/6 and P4 staples, 24/8



**Rexel Code** 010307 **On Pack Code** 55490081



### Rexel Heavy Duty Tacker

- Metal tacker for heavy duty purposes
- The handle includes a safety lock
- Suitable for 23/6, 23/8, 23/10 and 23/13 staples
- Safety lock handle
- Box 4
- Carton 12



**Rexel Code** 010508 **On Pack Code** 2101209



### Rexel Value Tacker

- Durable plastic housing
- Ruler on base for accuracy
- Lock down handle
- Uses No. 23 staples in 6 and 8mm leg lengths
- Box 4
- Carton 24



**Rexel Code** 010500 **On Pack Code** 2101210



### Rapid Hobby Tacker

- This light, easy to use, great value staple gun is perfect for simpler tasks around the house and designed for users with smaller hands. Makes short work of jobs such as furniture upholstery and decorative work with different types of cloth or textile.
- For finewire staple No. 53, 4-8 mm
- Includes a starter set of staples
- 2 year guarantee



**Rexel Code** 010510 **On Pack Code** 23781300



### Rexel No. 23 Series Staples



Staples	Capacity Sheets	Fits Stapler Type	Rexel Code	On Pack Code
23/6 (1000)	20	Tacker	050233	2101211
23/8 (1000)	40	Tacker/Gladiator/Apollo	050234	2101054
23/10 (1000)	60	Tacker/Gladiator/Apollo	050235	2101212
23/13 (1000)	80	Tacker/Gladiator/Apollo	050236	2101053
23/17 (1000)	130	Gladiator/Apollo	050238	2101052
23/20 (1000)	160	Gladiator/Apollo	050240	2100926
23/24 (1000)	180	Apollo	050242	2100927

Staples	Box/Carton	Box Qty	Capacity Sheets	Stapler Type	Rexel Code	On Pack Code
Rexel No. 10	20/500	1000	12	Office Plier 10/Buster 10	050103	06150
Rexel No. 16	20/500	1000	20	24/6	050108	06121
Rexel No. 16	1/20	5000	20	24/6	050206	06010
Rexel No. 18	1/20	5000	30	24/8	050208	06035
Rexel No. 23/6	20/200	1000	-	Tacker	050233	2101211
Rexel No. 23/8	20/200	1000	40	Tacker/Gladiator/Apollo	050234	2101054
Rexel No. 23/10	20/200	1000	60	Tacker/Gladiator/Apollo	050235	2101212
Rexel No. 23/13	20/200	1000	80	Tacker/Gladiator/Apollo	050236	2101053
Rexel No. 23/17	10/100	1000	130	Gladiator/Apollo	050238	2101052
Rexel No. 23/20	10/100	1000	160	Gladiator/Apollo	050240	2100926
Rexel No. 23/24	10/100	1000	180	Apollo	050242	2100927
Rexel No. 25	20/80	1500	10	Bambi	050105	05020
Rexel Optima 40 (56)		3750	40	Optima 40	050310	2102496
Rexel No. 56	20/500	1000	20	26/6	050106	06131
Rexel No. 56	1/20	5000	20	26/6	030100	06025
Rexel No. 66/8	1/20	5000	60	Giant/Goliath	050226	06065
Rexel No. 66/11	1/20	5000	80	Giant/Goliath	050227	06070
Rexel No. 66/14	1/20	5000	100	Giant/Goliath	050228	06075
Rexel No. 66/8	20/200	1000	60	Giant/Goliath	050244	2115698
Rexel No. 66/11	20/200	1000	80	Giant/Goliath	050246	2115699
Rexel No. 66/14	10/100	1000	100	Giant/Goliath	050248	2115700
Rexel Optima 70	1/20	2500	70	Optima 45 & 70	050300	2102497
Rexel Mercury	1/20	2500	120	Mercury	050220	2100928
Rexel Odyssey	10/40	2500	60	Odyssey	050207	2100050
Rexel Stella 30	Cartridge	5000	30	Stella 30	010219	06308
Rexel Stella 70	Cartridge	5000	70	Stella 70	010221	06311
Leitz (E1) 5568		2500	30	Leitz NeXXt WOW Electric	050404	55680000
Leitz (24/6) 5570		1000	30	Leitz NeXXt WOW Electric	050402	55700000
Leitz (S1)		2500	30	Leitz Softpress	050400	549700000
Leitz P3 Staples 24/6		1000	20	Leitz Plier 5549	050410	55540000
Leitz P3 Staples 24/6		5000	20	Leitz Long arm	050412	55721000
Leitz P4 Staples		1000	40	Leitz Plier 5549	050414	55590000
Rapid Staple No. 53/4 11.4 x 4mm	Clam	1620		Rapid Gun Hobby Tacker	050450	40109501
Rapid Staple No. 53/6 11.4 x 6mm	Clam	1080		Rapid Gun Hobby Tacker	050452	40109502
Rapid Staple No. 53/6 11.4 x 6mm	Box	2500		Rapid Gun Hobby Tacker	050454	11856225
Rapid Staple No. 53/8 11.4 x 8mm	Clam	1080		Rapid Gun Hobby Tacker	050456	40109503
Rapid Staple No. 53/8 11.4 x 8mm	Box	2500		Rapid Gun Hobby Tacker	050458	11857025
Rapid Staple No. 53/8 8mm	Box	2500		Rapid HobbyTack Dual Clam	050460	23808000
Rapid Staple No. 53/10 10mm	Box	2500		Rapid HobbyTack Dual Clam	050462	11858825
Rapid Staple No. 53/12 12mm	Box	2500		Rapid HobbyTack Dual Clam	050464	11859625
Rapid Brad No.8 8/15mm	Box	2500		Rapid HobbyTack Dual Clam	050466	40100532
Rapid Cable Clamp Staple No. 7/12	Box	960		Rapid Multitasker	050468	40109523
Rapid Pin No.9 9/15mm	Box	1000		Rapid Multitasker	050470	40109538



SHREDDING  
LAMINATING  
BINDING  
STAPLING  
PUNCHING  
SUNDRIES  
PAPER & BOARD  
STORAGE  
ERGONOMICS  
GUILLOTINES  
VISUAL COMMUNICATION

SHREDDING

LAMINATING

BINDING

STAPLING

PUNCHING

SUNDRIES

PAPER & BOARD

STORAGE

ERGONOMICS

GUILLOTINES

VISUAL COMMUNICATION

### Rexel V210 (2-Hole) 10 Sheet Punch

- All metal
- Removable Confetti tray
- Slide Guide
- Box 12
- Carton 72

Colour	Rexel Code	On Pack Code
Black	● 110216BK	2100759
Blue	● 110216BU	2100758
Lime	● 110216GN	2104142
Purple	● 110216PU	2104140
Pink	● 110216PI	2104141

\*Colour Match  
X 15 Staplers – Page 32



### Rexel V220 (2-Hole) 20 Sheet Punch

- All metal
- Removable Confetti tray
- Slide Guide
- Box 6
- Carton 36

Colour	Rexel Code	On Pack Code
Black	● 110217BK	2100763
Blue	● 110217BU	2100762
Lime	● 110217GN	2104145
Purple	● 110217PU	2104143
Pink	● 110217PI	2104144

\*Colour Match  
X 15 Staplers – Page 32



### Rexel V230 (2-Hole) 30 Sheet Punch

- All metal
- Removable Confetti tray
- Slide Guide
- Box 6
- Carton 36

Colour	Rexel Code	On Pack Code
Black	● 110218BK	2100767
Blue	● 110218BU	2100766
Lime	● 110218GN	2104148
Purple	● 110218PU	2104146
Pink	● 110218PI	2104147

\*Colour Match  
X 15 Staplers – Page 32



### Rexel V240 (2-Hole) 40 Sheet Punch

- 2 hole punch
- Cast metal, quality punch
- Easy to empty confetti base
- Slide Guide
- Box 6
- Carton 12

Colour	Rexel Code	On Pack Code
Black	● 110219BK	2103653
Blue	● 110219BU	2103654



### Rexel V260 (2-Hole) 60 Sheet Punch

- 2 hole punch
- Extra strong aluminium die-cast punch
- Hinged confetti tray
- Folds down for tidy storage
- Carton 5

Colour	Rexel Code	On Pack Code
Black	● 110210BK	08910



### Rexel ET230 (2-Hole) 30 Sheet Punch

- The EasyTouch is a low force, metal 2 hole punch for up to 30 sheets
- Requires 50% less effort when punching
  - Promote workplace wellness
  - Lock down handle for easy storage
  - Metal construction

Colour	Rexel Code	On Pack Code
Black/Grey	● 110284	2102575



### Rexel S120 (1-Hole) 20 Sheet Punch

- Single hole punch for up to 20 sheets of paper (80 gsm)
- Pliers design makes it quick and easy to punch paper
- Slim and smooth handle for comfortable use
- Easy to empty, hinged confetti tray to prevent spills
- Robust metal construction ensures strength and durability
- 2 year guarantee
- Weight: 0.16kg

Rexel Code	On Pack Code
110202	20120041



### Rexel Eyelet Punch Velo 950

- Single hole punch
- Effortlessly punches up to 13mm and attaches eyelets to your documents

Eyelettes (pkt 500)	Sheet Cap
3.2mm	110305 30
4.2mm	110306 40
5.5mm	110307 50

Rexel Code	On Pack Code
110300	20220049





## Leitz 5038 NeXXt (2 hole) 16 Sheet Punch

- Punches up to 16 sheets of paper (80 gsm)
- Grip zone and sharper cutters reduce punching effort
- Clear format demarcations and strong guide bar ensure perfect paper alignment
- Easy to empty, hinged waste box



16

Replaces Rexel P215 Punch

Colour	Rexel Code	On Pack Code
Blue	● 110221BU	50380035
Black	● 110221BK	50380095

## Leitz 5005 NeXXt (2 hole) 25 Sheet Punch

- Punches up to 25 sheets of paper (80 gsm)
- Grip zone and sharper cutters reduce punching effort
- Clear format demarcations and strong guide bar ensure perfect paper alignment
- Easy to empty, hinged waste box
- 10 year guarantee



25

Replaces Rexel P225 Punch

Colour	Rexel Code	On Pack Code
Blue	● 110225BU	50050035
Black	● 110225BK	50050095

## Leitz 5138 NeXXt (2 hole) 40 Sheet Punch

- Punches up to 40 sheets of paper (80 gsm)
- Grip zone and sharper cutters reduce punching effort
- Clear format demarcations and strong guide bar ensure perfect paper alignment
- Easy to empty, hinged waste box
- Unique locking mechanism
- 10 year guarantee



40

Replaces Rexel P240Punch

Colour	Rexel Code	On Pack Code
Blue	● 110229BU	51380035
Black	● 110229BK	51380095

## Leitz 5180 NeXXt (2 hole) 65 Sheet Punch

- Punches up to 65 sheets of paper (80 gsm)
- Powersave technology means effortless punching
- Easy to read and sturdy guide bar, up to A3
- Integrated lever mechanism for space-saving
- Non-slip coated lever ensures good grip
- Easy to empty, hinged waste box
- 10 year guarantee



Lock down for easy storage

65

Replaces Rexel P265 Punch

Colour	Rexel Code	On Pack Code
Black	● 110231BK	51800095

SHREDDING

LAMINATING

BINDING

STAPLING

PUNCHING

SUNDRIES

PAPER & BOARD

STORAGE

ERGONOMICS

GUILLOTINES

VISUAL COMMUNICATION

### ReXel HD2300X (2-Hole) 300 Sheet Punch

- Robust metal **2 hole** punch
- Modern, stylish design
- Adjustable paper guide with 150 and 300 sheet markings
- Punches 6mm holes 80mm between hole centres
- Replacement discs, punch pins and pin cleaner available

ReXel Code	On Pack Code
110244	2101521

#### Spare Pins (x2), Discs (x4)

ReXel Code	On Pack Code
110254	2101631



300

### ReXel HD 2150 (2-Hole) 150 Sheet Punch

- **2 hole** punch
- Locking metal paper guide activated by the push of a button
- Adjustable depth gauge for varying margins (9mm to 17mm from edge of paper to centre)

ReXel Code	On Pack Code
110366	2101234

#### Spare Disc

ReXel Code
110238

#### Spare Cutter

ReXel Code
110233



150

### ReXel V412 Value (4-Hole) 12 Sheet Punch

- All metal construction
- Removable confetti tray
- Paper size guide for easy paper alignment



Colour	ReXel Code	On Pack Code
Black ●	110219	08309

12

### Leitz 5132 (4-Hole) 40 Sheet Punch

- Punches up to 40 sheets of paper (80 gsm)
- Easy paper alignment
- Non-scratch, non-slip base
- Easy to empty, hinged waste box
- 10 year guarantee and GS safety tested

ReXel Code	On Pack Code
110420	51320085



### ReXel HD2300 (2-Hole) 300 Sheet Punch

- **2 hole** punch
- Robust metal construction with metal paper guide
- Hollow pin technology for effortless punching
- 6mm holes, 80mm apart

ReXel Code	On Pack Code
110236	2100994

#### Spare Disc

ReXel Code
110238

#### Spare Pin

ReXel Code
110235



300

### ReXel HD4150 (4-Hole) 150 Sheet Punch

- Easily Punch up to 150 sheets (80gsm)
- Large handle plus sharp, hollow pins increases its leverage
- Adjustable paper depth gauge
- Locking metal paper guide

ReXel Code	On Pack Code
110237	2101235

#### Spare Cutter

ReXel Code
110233



150

### Leitz AKTO 5114 (4-Hole) 30 Sheet Punch

- Punches up to 30 sheets of paper (80 gsm)
- Clip system allows hole number and distances to be easily adjusted
- For up to 6 holes. 4 cutters included
- Easily adjustable scale bar and settings for the most common ring binders and personal organisers. Format up to A2
- Integrated lever mechanism
- 10 year guarantee and GS safety tested

ReXel Code	On Pack Code
110420	51140084



30



40

# Notebooks



## Rexel ColourHide Pocket Notebook

- Spiral bound 96 page pocket notebook
- 112mm x 77mm



Colour	Rexel Code	On Pack Code
Black	● 165000	165000
Lime	● 165001	165001
Purple	● 165002	165002
Pink	● 165003	165003
Blue	● 165004	165004

## Rexel ColourHide A4 Sketch Book

- Spiral bound 60 page sketch book
- Acid free cartridge paper
- 110 gsm



Colour	Rexel Code	On Pack Code
Pink	● 165203	165203
Blue	● 165204	165204

## Rexel ColourHide A4 Notebook

- Spiral bound 120 page feint ruled
- Perforated sheets



Colour	Rexel Code	On Pack Code
Black	● 165060	165060
Lime	● 165061	165061
Purple	● 165062	165062
Pink	● 165063	165063
Blue	● 165064	165064

## Rexel ColourHide A5 Notebook

- Spiral bound 200 page notebook feint ruled
- Perforated sheets
- Note holder
- Rounded corners
- Removable bookmark



Colour	Rexel Code	On Pack Code
Black	● 165040	165040
Lime	● 165041	165041
Purple	● 165042	165042
Pink	● 165043	165043
Blue	● 165044	165044

## Rexel Office Pencil HB

170400 (34253A)

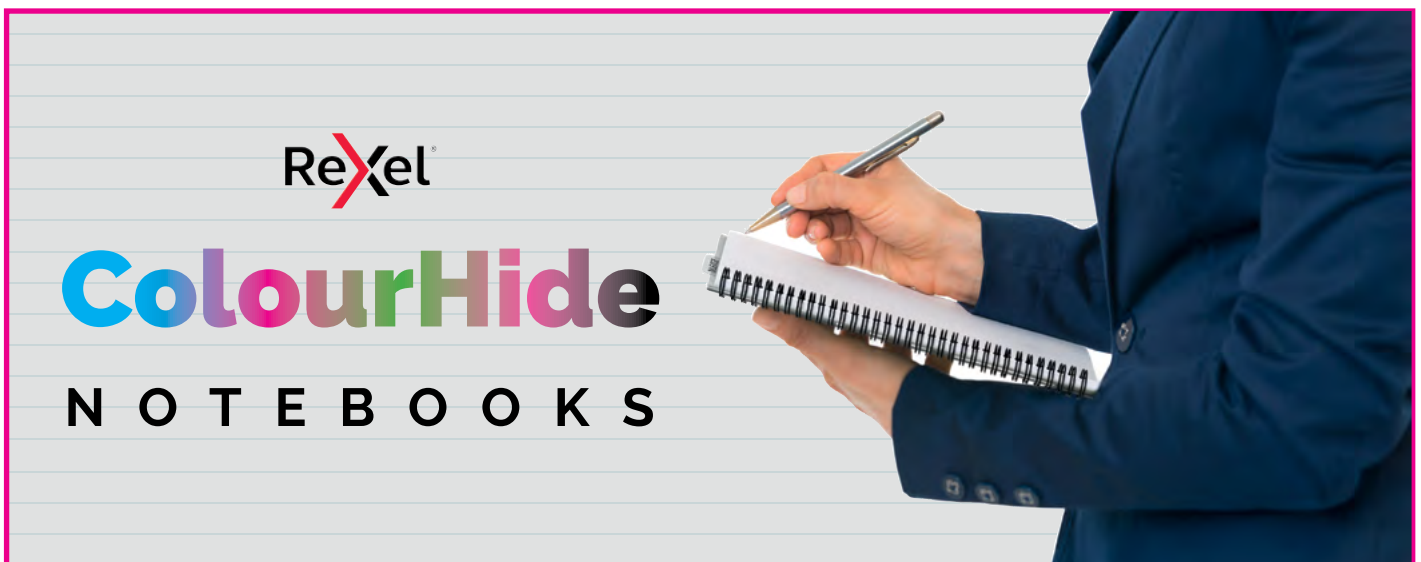
- General purpose HB graphite pencil.
- Ideal for home or office work.
- Box of 12



## Rexel Magic Clip Dispenser

110310 (20421089)

- Easy way to clip loose sheets of paper together
- Complete with pack of 4.8 mm clips
- Supplied with 20 assorted nickel clips



**Rexel Carry/Active Folders**

- Premium quality stud fastening envelope
- Hold up to 100 sheets
- Packs of assorted colours or individual coloured packs



Colour	A3 Pack 5	On Pack Code
White	155014	16131WH

Colour	A4 Pack 5	On Pack Code
Blue	1550BU	16129BU
White	1550WH	16129WH
Red	1550RD	16129RD
Assorted	1550AS(6)	16129AS

Colour	A5 Pack 5	On Pack Code
Assorted	155100	2100420

**Rexel CD Pockets**

- Premium quality pocket with compartments for 2 CDs and sections for labelling
- Offers long term protection and easy access
- Carton 30 (Pack 5)



Rexel Code	On Pack Code
140670	2001007

**Rexel 5 Part Trans File**

- 5 division file for punched papers
- Each division has its own file fastener and separated by coloured indexes
- Box 15
- Carton 150



Rexel Code	On Pack Code
140520	2100593

**NEW**

**LEITZ PRECISION TRIMMERS & CUTTERS**

TO BE THIS PRECISE TAKES PRECISION

**VIEW RANGE**

See Page 52&53



SHREDDING

LAMINATING

BINDING

STAPLING

PUNCHING

SUNDRIES

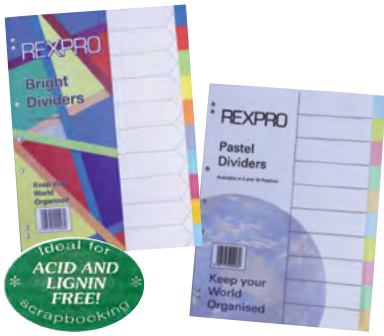
PAPER & BOARD

STORAGE

ERGONOMICS

GUILLOTINES

VISUAL COMMUNICATION



## Rexpro Bright Board Dividers

1232AS	5 division
1233AS	10 division

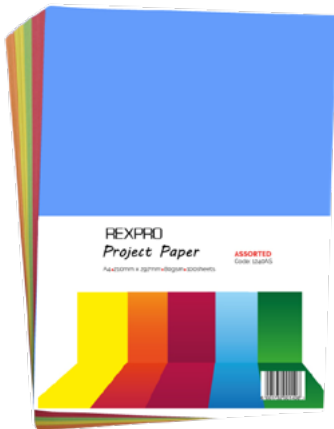
## Rexpro Pastel Board Dividers

1235PS	5 division
1238PS	10 division

## Rexpro Paper and Board Pads A4

1240PD	Assorted colours 50 sheets, 80gsm
1220PD	Assorted colours 25 sheets 160gsm

## Bright Paper and Board

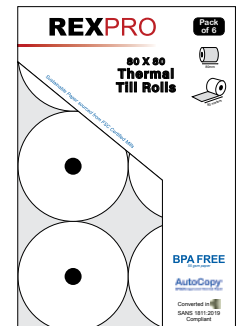
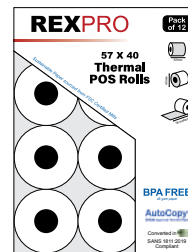


Colour	A4 paper 80gsm Pack 100	A4 board 160gsm Pack 100	A2 board 160gsm Pack 25
Assorted	1240AS	1220AS	1222AS
Black		1220BK	
Blue	1240BB	1220BB	
Christmas Green	1240CG		
Gold	1240GD	1220GD	
Lagoon Green	1240LG		
Lime	1240LI	1220LI	
Midnight Blue		1220MB	
Orange	1240OR	1220OR	
Pink	1240PI	1220PI	
Purple	1240PU		
Red	1740RD	1220RD	
Sky Blue	1240SB	1220SB	
White		121700	
Yellow	1240YE	1220YE	

## Point of Sale Till Rolls



- Premium quality
- All thermal paper is Epson approved
- Image life of 5 to 10 years on thermal rolls if stored correctly\*
- All rolls are SANS 1811: 2019 certified
- All thermal paper is BPA free
- All paper is FSC and PEFC certified (Sustainably sourced pulp).



57x40 Credit Card Machine Rolls (Thermal)		80x80 Point of Sale Till Rolls (Thermal)	
Rexel Code	129600	Rexel Code	129610
<b>Width</b>	57mm		80mm
<b>Diameter</b>	40mm		80mm
<b>Core</b>	15mm		13mm
<b>Length</b>	18 metres		80 metres
<b>Paper</b>	48gsm BPA Free		55gsm BPA Free
<b>Packed</b>	12 per box		6 per box

## Rexpro Office Attendance Register

### Office

1260OR

- Shops and Office Act 1964
- A4



## Rexpro School Attendance Register

### School

1260SR

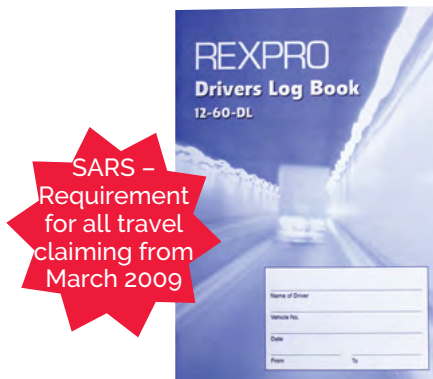
- 50 pupil register
- A4



## Rexpro Driver's Log Book

1260DL

- 40 Page
- A5
- Carton 20



## Rexpro Telephone Message Pads

120002

- 6 to view self carbonised
- 300 messages
- Can be custom printed
- Pack 10
- Carton 60



## Rexpro Receipt Book

120007

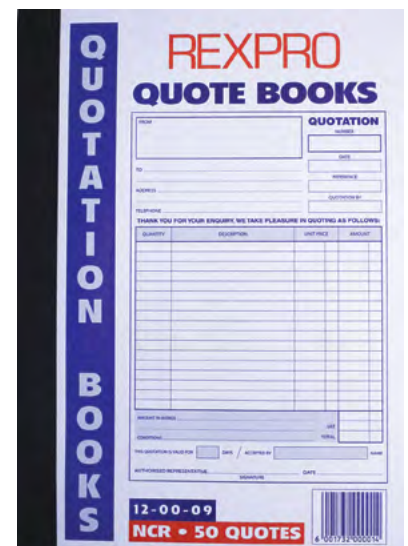
- Carbonised, pre-numbered
- 200 Receipts
- Pack 10
- Carton 20



## Rexpro Quote Book

120009

- 50 sets
- A4
- Perforated
- Self carbonised
- Pack 10
- Carton 60



SHREDDING

LAMINATING

BINDING

STAPLING

PUNCHING

SUNDRIES

PAPER & BOARD

STORAGE

ERGONOMICS

GUILLOTINES

VISUAL COMMUNICATION

## Rexpro Archive Box – Collapsible

- Collapsible
- Long side flap access



Type	Rexel Code	Size (mm)
A4 Kraft	129015	310 x 240 x 75
F/scap Kraft	129020	380 x 270 x 95
Jumbo Kraft	129025	380 x 270 x 185

## Rexpro Dust Cover

129100

- Covers lever arch files
- Black, rigid
- Wrapped 10s
- File not included



## Rexpro 5 in 1 Storage Box

120006

- Instant assembly
- Box holds up to 25kg
- Lid fits over tabbed hanging files
- Stores A4 / F/S files
- Plastic strips prevent edges from fraying
- Files not included



## Rexpro Lever Arch File Storage Box (Black)

- Store 5/6 lever arch files
- Rigid – Individually wrapped



Type	Rexel Code	Size (mm)
Black	129060	510 x 365 x 310 (5 compartment)
Black	129066	620 x 360 x 310 (6 compartment)
Black	129110	510 x 360 x 310 (5 compartment - Flat Packed)
Black	129114	620 x 360 x 310 (6 compartment - Flat Packed)

## Rexpro Archive Box

- Stitched
- Short end flap access
- Wrapped 6s



Type	Rexel Code	Size (mm)
Kraft	129005	270 x 370 x 92

## Rexpro Springclip Box File

129080

- Rigid, Mottle
- Size(mm): 340 x 270 x 70
- Wrapped 10s



## Rexpro Storage Box A3 – Single Wrapped

129070

- Off site, single wall
- Capacity: 5 x A4 Storage Boxes
- Base and lid included
- Size (mm): 330 x 260 x 445

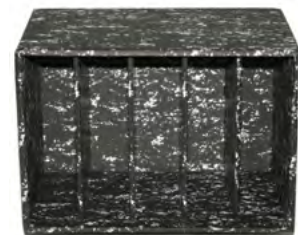


## Rexpro Storage Box A3 – Strapped 25s

129071

## Rexpro Lever Arch File Storage Box (Mottled)

- Store 5 lever arch files
- Rigid – Individually wrapped



Type	Rexel Code	Size (mm)
Mottled	129061	510 x 365 x 310 (5 compartment)
Mottled	129112	510 x 365 x 310 (5 compartment - Flat Packed)



Foot



Wrist



Neck



Back



Organisations depend on their people, and smart organisations keep them at their best. The Kensington Wellbeing Range is designed to provide a solution for all areas of the body. Our unique SmartFit® System means that the best option is now the easiest one. Simple sizing and smooth adjustment means you always get the right solution for your entire team.



**SmartFit®**

Our simple colour-coded system allows users to adjust to the perfect fit in seconds. All that you need is the SmartFit® hand chart to quickly and accurately set up and adjust a product to your personal comfort setting.





## LowerBodyFit

### Kensington Footrest SoleSaver

- Keep legs elevated for improved posture and circulation
- 3 angle settings: 10°, 15°, 20°
- Large non-stick foot surface
- Generous platform 450x350mm



Rexel Code	On Pack Code
204002	56152

### Kensington Footrest Solemate Plus

- Tilts up to 20 degrees for additional comfort with convenient lockable tilt control
- Textured foot grip panel helps prevent slipping
- Height adjusts from 3.5" to 5", angle adjusts up to 20 degrees for individual comfort
- Large, non-skid foot surface provides added control



Rexel Code	On Pack Code
204010	56146

### Kensington Comform BackRest

- Reduce back pain with added support and comfort
- Ventilated support, keeps the back cool and dry
- Height adjustable for customised lumbar support
- Independent springs conform to fit body shapes and postures

Rexel Code	On Pack Code
204070	K60412WW



### Kensington Footrest Solerest

- Multiple tilt options for personalised comfort
- Contoured foot grip panel helps prevent slipping
- Keep legs elevated for improved posture and circulation
- 12 Height and angle positions to support your feet
- Cool graphite grey platform in tough, scratch resistant and easy to clean plastic



Rexel Code	On Pack Code
204004	56148

### Kensington Anti-Fatigue Mat

- Ergonomically engineered to keep legs, back and feet comfortable whilst standing at the office, perfect accompaniment to a sit/stand desk.
- Engineered to stimulate blood circulation and reduce fatigue on legs, back and feet by providing better pressure distribution.
- 17mm thick, patented rubberised-gel foam provides superior performance, strength against tearing, making it easy-to-clean, waterproof and oil-resistant
- NFSI certified anti-slip surface reduces slipping concerns
- Size: 900x500x17mm



Rexel Code	On Pack Code
204084	K55401WW

The strongest muscles we have are in our lower body. They help us stand, walk and run. It's very important to keep your lower body in the correct positions. A seat cushion will stimulate blood circulation and improve lower body posture.

## LowerBodyFit

### Kensington Ergonomic Memory Foam Seat Cushion

- Ergonomic design promotes healthy posture throughout the day when sitting down
- Improves circulation and provides support to lower back and tailbone
- High density memory foam provides lasting support and maintains shape after use
- Removable cover for easy cleaning
- Carrying strap for easy transportation
- Anti slip backing prevents sliding



**Rexel Code** 204076  
**On Pack Code** K55805WW

### Kensington Premium Cool-Gel Seat Rest

- Cooling fabric with Cool-Gel core decreases body temperature for ultimate comfort
- Improves circulation and provides support to lower back and tailbone
- Provides sciatica relief by minimising contact between tailbone and seat cushion with the U-shaped cut out
- Carrying strap for easy transportation
- Anti slip backing prevents sliding
- Premium honey comb memory foam maintains shape after use



**Rexel Code** 204077  
**On Pack Code** K55807WW

## UpperBodyFit

### Kensington SmartFit® Sit/Stand Desk



- The smart way to stand at work. Switch between sitting and standing during your working day, burning calories and promoting muscle movement.
- 900x330mm (35.4") wide main desk surface - ample room for dual monitors.
- Easy to raise and lower with the pneumatic lift for smooth and effortless adjustment
- Fully assembled for frustration free set up.
- Intergrated keyboard and mouse deck

**Rexel Code** 204082  
**On Pack Code** K52804WW

SHREDDING

LAMINATING

BINDING

STAPLING

PUNCHING

SUNDRIES

PAPER & BOARD

STORAGE

ERGONOMICS

GUILLOTINES

VISUAL COMMUNICATION

## UpperBodyFit

### Kensington SmartFit Conform WristRest

- Reduce wrist pain with added support and comfort
- Ergonomic wrist rest relieves pressure and keeps arm at neutral angle
- SmartFit personalised colour coding system makes it easy to select the best support for your wrist
- Includes colour size chart and 4 colour coded interchangeable inserts to ensure proper fit



Rexel Code	On Pack Code
204050	K55787EU

### Kensington Duo Gel Keyboard Wrist Rests



FIRA Tested  
Details available on request



- Gel soft finish pillow provides wrist support whilst typing
- Ventilation channel helps keep hands cool and dry
  - Matches natural curve of wrist and hand for comfortable typing

Rexel Code	On Pack Code	Colour
204051	62397	Blue/Black
204049	62398	Red/Black

### Kensington Flex Clip Portable Copyholder

- Flexible copyholder holds copy, reminders even keys
- Compact and portable
- Use on your notebook or desktop PC



Rexel Code	On Pack Code
203000	62081

### Kensington SmartFit MousePad

- Alleviate mouse and typing aches and pains
- Cool, soft and comfortable wrist pad
- Height adjustable to achieve ergonomic mousing angle
- Anti-microbial surface resists stains and odours



Rexel Code	On Pack Code
204052	K55793WW

### Kensington Duo Gel Mouse Wrist Rests



FIRA Tested  
Details available on request



- Gel soft finish pillow matches natural curve of wrist and hand for comfortable scrolling & clicking
- Ventilation channel helps keep hands cool and dry
- Soft finish that is easy to wipe clean

Rexel Code	On Pack Code	Colour
204045	62399	Black/Smoke
204031	62402	Red/Black
204044	62401	Blue/Smoke

### Kensington Insight Plus Easel Copyholder

- Positions documents in a more comfortable position to reduce neck and eye strain
- Four angle settings for flexibility
- Accepts A4, letter and legal sizes of paper, up to 50 sheets
- Folds flat for easy storage



Rexel Code (Ivory)	On Pack Code (Ivory)
203010	62405

# UpperBodyFit

## Kensington Easy Riser Laptop Stand

- Reducing strain on the laptop battery and circuitry
- Increase air circulation to keep your notebook cooler
- Fits 12" and 17" notebooks
- Folds flat to travel easily



Rexel Code	On Pack Code	Colour
205006	60112EU	Grey
205007	K52788WW	Black

## Kensington Laptop Cooling Stand

- Lifts laptop to promote air flow and reduce heat build-up
- Adjustable height reduces neck and eye strain
- USB cooling fan keeps laptop free from heat build-up to keep you comfortable and productive
- Fits 12" and 17"
- Black

Ultra Quiet Cooling Fan



Rexel Code	On Pack Code
205009	K62842WW

## Kensington SmartFit® Spin Station Monitor Stand

- Raises your monitor to the correct level for neck and back comfort.
- Patented, spinning multi-compartment storage area underneath the platform provides desktop accessory organisation
- SmartFit® System lets you easily adjust monitor height to your personal comfort colour



Rexel Code	On Pack Code	Colour
205016	K52787WW	Black



## Kensington Flat Panel Monitor Stand

- Sleek design uses minimum desk space
- Height adjustable for optimum screen viewing
- Two adjustable shelves which can hold speakers or any other accessories
- Rubber feet protect surface



Rexel Code	On Pack Code
205014	60039

## Kensington Privacy Filter

- Effective screen protection to reduce risk of unwittingly sharing confidential data with an unwanted viewer
- Blue light filter
- Easy attachment
- Anti reflective
- Touchscreen compatible
- Limited viewing angle



Rexel Code (24")	On Pack Code (24")
204100	626487
Rexel Code (27")	On Pack Code (27")
204105	626491

SHREDDING  
LAMINATING  
BINDING  
STAPLING  
PUNCHING  
SUNDRIES  
PAPER & BOARD  
STORAGE  
ERGONOMICS  
GUILLOTINES  
VISUAL COMMUNICATION

# Cleaner Air Matters



Clean air everywhere



Senses pollutants



Responds to your air



Captures and destroys pollutants

\*DuPont™ & the Oval logo are trademarks or registered trademarks of DuPont de Nemours, Inc. used under license by ACCO Brands LLC. \* HEPA Filters applies to Z3000 only

Air Purifier Model	Z-3000		Z-2000		Z-1000	
<b>Rexel Code</b>	204220		204210		204200	
<b>On Pack Code</b>	2415114EU		2415113EU		2415112EU	
SensorPod	✓		✓		-	
Air Quality Indicator	✓		✓		-	
PureDirect™ Technology	✓		✓		•	
Levels of Purification	4		4		3	
Room Coverage	70 m <sup>2</sup>		35m <sup>2</sup>		23m <sup>2</sup>	
Auto Mode	✓		✓		-	
Carry Handle	✓		✓		✓	
Touch Controls	✓		✓		✓	
Dimensions (W x H)	26 x 73 cm		22 x 57cm		20 x 45cm	
Weight	5.7 kg		4.1 kg		3.5 kg	
<b>Consumables</b>	<b>Rexel Code</b>	<b>On Pack Code</b>	<b>Rexel Code</b>	<b>On Pack Code</b>	<b>Rexel Code</b>	<b>On Pack Code</b>
Carbon Filter (3 pcs)	204222	2415109	204212	2415106	204202	2415103
*Hepa (H) /Particulate Filter (P)	204224	2415110	204214	2415107	204204	2415104
UV Bulb	204225	2415111	204216	2415108	204206	2415105

\* HEPA Filters apply to Z3000

SHREDDING

LAMINATING

BINDING

STAPLING

PUNCHING

SUNDRIES

PAPER & BOARD

STORAGE

ERGONOMICS

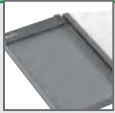
GUILLOTINES

VISUAL COMMUNICATION

# LEITZ PRECISION TRIMMERS & GUILLOTINES TO BE THIS PRECISE TAKES PRECISION

Our new range of powerful Paper Trimmers and Cutters offers secure and accurate cutting with effortless alignment.

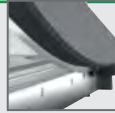
Featuring unique EdgeGlow light technology and high quality blades, enjoy the kind of precision you have come to expect from Leitz.



**Premium** quality cutting blades and work surfaces



**Precision** pinpoint accurate alignment guides



**Easy** to use with unique EdgeGlow light



**Safe** enclosed trimmer blades and secure cutter blades

## Leitz Precision Home A4 Paper Trimmer



- Comfortable easy-grip trimmer head, clear-cut window and transparent timing guide rail ensure effortless and accurate results every time
- Clear paper clamp flips up and down making it easy to insert the paper and simple metric grid lines ensure easy paper alignment
- Super smooth table surface with angle guides and accurate measuring lines for precise trimming
- Lightweight plastic base with non-slip rubber feet

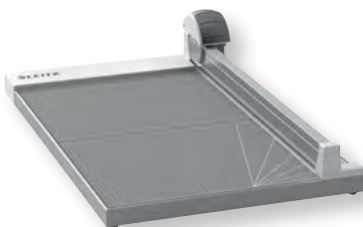
- Lightweight and compact A4 paper trimmer ideal for home, crafts and hobby use
- The safely enclosed fixed blade easily cuts up to 8 sheets of 80gsm paper



**Rexel Code**    **On Pack Code**  
130005        90250000

*Replaces: Rexel A100 A4 Trimmer*

## Leitz Precision Office A4+ Paper Trimmer



- Choose from straight, wave or perforating blades which come in quick change clear plastic cartridges
- Wave blade trims and perforating blade perforates up to 5 sheets of 80gsm paper
- Quickly and safely change between blades by dropping the selected cartridge into the ergonomically designed easy-grip trimmer head
- Automatic paper clamp and simple metric grid lines
- Sturdy plastic base with non-slip rubber feet for stability and can be easily stored when not in use

- Strong and versatile A4+rotary paper trimmer with a 385mm trimming length ideal for frequent use in the office or for serious crafting
- Steel rotary blade easily trims up to 15 sheets of 80gsm paper



**Rexel Code**    **On Pack Code**  
130045        90270000

*Replaces: Rexel A425 A4 Trimmer*

## Leitz Precision Home Office A4 Paper Trimmer



- Clear Paper clamp makes it easy to insert and secure the paper prior to trimming and simple metric grid lines ensure easy paper alignment
- Super smooth table surface with angle guides and accurate measuring lines for precise trimming
- Sturdy plastic base with non-slip rubber feet

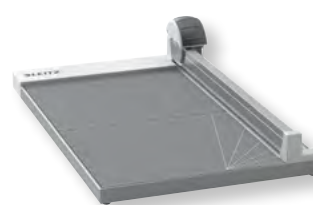
- Strong and lightweight A4 bypass paper trimmer ideal for daily paper trimming tasks at home or in the office
- Steel circular blade easily trims up to 10 sheets of 80gsm paper
- Comfortable easy-grip trimmer head and clear-cut guide rail



**Rexel Code**    **On Pack Code**  
130042        90260000

*Replaces: Rexel A200 A4 Trimmer*

## Leitz Precision Office A3 Paper Trimmer



- Choose from straight, wave or perforating blades which come in quick change clear plastic cartridges
- Wave blade trims and perforating blade perforates up to 5 sheets of 80gsm paper
- Quickly and safely change between blades by dropping the selected cartridge into the ergonomically designed easy-grip trimmer head
- Automatic paper clamp and simple metric grid lines
- Sturdy plastic base with non-slip rubber feet for stability and can be easily stored when not in use

- Strong and versatile A4+rotary paper trimmer with a 385mm trimming length ideal for frequent use in the office or for serious crafting
- High quality ground steel rotary blade easily trims up to 15 sheets of 80gsm paper (with the straight blade)



**Rexel Code**    **On Pack Code**  
130048        90280000

*Replaces: Rexel A445 A3 Trimmer*

## Leitz Precision Home A4 Guillotine



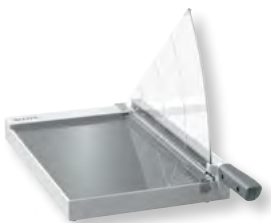
- Lightweight and compact A4 paper cutter ideal for home, crafts and hobby use
- Stainless steel safety blade cuts up to 8 sheets of 80gsm paper
- Ergonomic handle ensure effortless and accurate results every time
- Clear manual paper clamp
- Super smooth laminated table surface with simple metric grid lines, angle guides and accurate measuring rules for easy paper alignment
- Plastic base with non-slip rubber feet for stability
- Secure blade safety guard



Rexel Code	On Pack Code
130092	90180000

Replaces: *Rexel CL100 A4 Guillotine*

## Leitz Precision Office A4+ /A3 Guillotine



- Powerful and robust A4+ /A3 paper cutter ideal for general office use
- Stainless-steel blade cuts up to 15 sheets of 80gsm paper
- Unique EdgeGlow light
- Ergonomic handle ensure effortless and accurate results every time
- Clear manual paper clamp securely holds the paper in place
- Super smooth glass work surface with simple metric grid lines, angle guides and accurate measuring rules for easy paper alignment
- Sturdy plastic base with non-slip rubber feet for safety and stability
- Secure blade safety guard



A4+		A3	
Rexel Code	On Pack Code	Rexel Code	On Pack Code
130112	90210000	130107	90220000

Replaces: *Rexel CL120 A3 Guillotine*

## Leitz Precision Home Office A4/A3 Guillotine



- Strong and lightweight A4/A3 paper cutter ideal for home and office use
- Stainless steel blade cuts up to 10 sheets of 80gsm paper
- Unique EdgeGlow light
- Ergonomic handle ensure effortless and accurate results every time
- Clear manual paper clamp
- Super smooth laminated table surface with simple metric grid lines, angle guides and accurate measuring rules for easy paper alignment
- Sturdy plastic base with non-slip rubber feet for safety and stability
- Secure blade safety guard

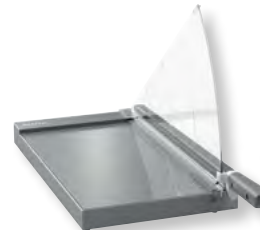


A4		A3	
Rexel Code	On Pack Code	Rexel Code	On Pack Code
130094	90190000	130105	90200000

Replaces: *Rexel CL200 A4 Guillotine*

Replaces: *Rexel CL120 A4 Guillotine*

## Leitz Precision Office Pro A4+ /A3 Guillotine



- Powerful and robust A4+ /A3 paper cutter ideal for frequent and high volume office use
- The high-quality stainless-steel blade cuts up to 25 sheets of 80gsm paper
- Unique EdgeGlow light
- Ergonomic handle ensure effortless and accurate results every time
- Clear manual paper clamp securely holds the paper in place
- Super smooth glass work surface with simple metric grid lines, angle guides and accurate measuring rules for easy paper alignment
- Strong but lightweight aluminium base with non-slip rubber feet
- Secure blade safety guard



A4+		A3	
Rexel Code	On Pack Code	Rexel Code	On Pack Code
130114	90230000	130132	90240000

Replaces: *Rexel CL410 A4 Guillotine*

Replaces: *Rexel CL420 A4 Guillotine*

Type	Paper Trimmers				Paper Guillotines						
	Home	Home Office	Office		Home	Home Office		Office		Office Pro	
Rexel Code	130005	130042	130045	130048	130092	130094	130105	130112	130107	130114	130132
On Pack Code	90250000	90260000	90270000	90280000	90180000	90190000	90200000	90210000	90220000	90230000	90240000
Format	A4	A4	A4+	A3	A4	A4	A3	A4+	A3	A4+	A3
Sheet capacity (80gsm)	8	10	15*		8	10		15		25	
Trim / Cut (mm)	305	305	381	420	305	305	420	381	420	381	420
Blade	Straight Cut	Straight Cut	Rotary Straight, Wave or Perforate		Ground Steel	Precision Ground Steel		Precision Ground Steel		Precision Ground Steel	
Bed	Plastic	Plastic	Wood Laminate		Wood Laminate	Wood Laminate		Premium Glass		Premium Glass	
Bed Width (mm)	115	167	280		250	250	300	250	300	250	
Precise Alignment Guide	✓	✓	✓	✓	✓	✓	✓	✓	✓	✓	✓
Precision Edge Glow	✓	-	-	-	-	✓	✓	✓	✓	✓	✓
Safety Blade Guard	-	-	-	-	✓	✓	✓	✓	✓	✓	✓
Guarantee in years**	2	3	5	5	2	3	3	5	5	5	5

\*\*excludes normal wear parts & consumables

### Available accessories for Paper Trimmers

<b>130006</b> 90290000	Blade for Leitz Precision Trimmer Home A4	<b>130044</b> 90310000 <b>130046</b> 90320000 <b>130047</b> 90330000	Straight Cut Blade for Leitz Precision Office Trimmer Wave Cut Blade for Leitz Precision Office Trimmer Perforating Blade for Leitz Precision Office Trimmer
	<b>130043</b> 90300000	Blade for Leitz Precision Trimmer Home Office A4	<b>130041</b> 90340000 <b>130041A3</b> 90350000



SHREDDING

LAMINATING

BINDING

STAPLING

PUNCHING

SUNDRIES

PAPER & BOARD

STORAGE

ERGONOMICS

GUILLOTINES

VISUAL  
COMMUNICATION

### Rexpro 350T A4 Guillotine

- Quality trimmer with semi sharp blade for A4 paper
- Sliding paper guide
- Cutting length 350mm
- Impact resistant ABS Plastic base



Rexel Code	Spare Blade
091302	091345



### Rexpro 350G A4 Guillotine

- Quality guillotine with semi sharp blade for A4 paper
- Paper hold, blade guard and sliding paper guide.
- Cutting length 350mm
- Impact resistant ABS Plastic base

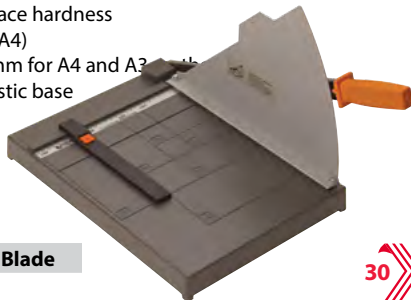


Rexel Code	Spare Blade
091303	091325



### Rexpro 350 PG A4 Guillotine

- Blade – 60 Rockwell surface hardness
- Cutting length 350mm (A4)
- Base size 410mm x 280mm for A4 and A3
- Impact resistant ABS Plastic base
- Sliding paper guide

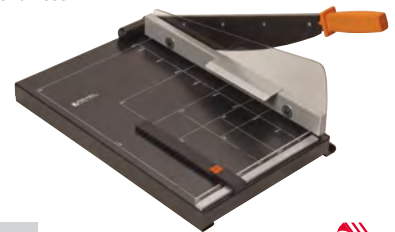


Rexel Code	Spare Blade
091304	091330



### Rexpro 380 PG A4 Guillotine

- Blade – 60 Rockwell surface hardness
- All metal base
- Sliding paper guide
- Cutting length 380mm

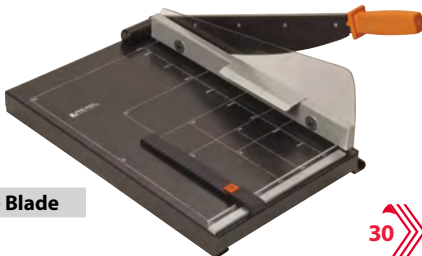


Rexel Code	Spare Blade
091306	091335



### Rexpro 420 PG A3 Guillotine

- Blade – 60 Rockwell surface hardness
- All metal base
- Sliding paper guide
- Cut length: 420mm



Rexel Code	Spare Blade
09 13 08	091340



**What is the difference between a Paper Trimmer and a Guillotine?**

*A Paper Trimmer has a blade on a track that you slide up and down your paper to trim it.*

*A Guillotine has a handle with a blade that pivots up and down to cut paper.*

## Wide Format Trimmers

### Rotary Trimmer KW 3022 1300

- A0+ rotary trimmer delivered with a dedicated stand. Can cut plotter and large size paper.
- Transparent and automatic paper press
- Side bars for easy alignment of material to cut
  - Solid steel base with screen printed photographic and paper sizes in mm and inches
  - Special side openings to cut paper sizes larger than the rated cutting width
  - Sharpened carbon steel blade, easily replaced by the push-button mechanism
  - Cutting width: 1.300 mm
  - Cutting thickness: 0,8 mm
  - Paper press: automatic
  - Dimensions (W.xD.xH.): 149,2x40,1x9,8 cm
  - Weight: 8 Kg + Stand



Rexel Code
130082

### Rotary Trimmer KW 3026 1500

- A0 rotary trimmer delivered with a dedicated stand. Can cut plotter and large size paper.
- Transparent and automatic paper press
- Side bars for easy alignment of material to cut
  - Solid steel base with screen printed photographic and paper sizes in mm and inches
  - Special side openings to cut paper sizes larger than the rated cutting width
  - Sharpened carbon steel blade, easily replaced by the push-button mechanism
  - Cutting width: 1.500 mm
  - Cutting thickness: 0,8 mm
  - Paper press: automatic
  - Dimensions (W.xD.xH.): 149,2x40,1x9,8 cm
  - Weight: 8 Kg + Stand



Rexel Code
130083



*Be creative*  
*Be collaborative*  
*Be inspired*



## Nobo Dry Wipe Boards

Frameless magnetic dry-erase board. Includes two magnets and mounting kit. White board includes a black ReWritable marker, while other colours include Glo-Write dry-erase marker

- Size: 360mm x 360mm
- Carton 8



Rexel Code	On Pack Code	PK	Colour
195065	1903802	6	White
195075	1903774	8	Black
195080	1903803	8	Pink
195085	1903773	8	Green
195086	1903873	8	Blue
195087	1903897	8	Purple

## Nobo Whiteboard - Black Frame

Magnetic dry-erase whiteboard with contemporary black home decor frame. Includes two magnets, one magnetic black rewritable marker and mounting kit.

- Size: 585mm x 430mm
- Carton 6



Rexel Code	On Pack Code
195030	1903785

## Nobo Whiteboard Erase Strip

Magnetic dry erase frameless strip in assorted colours. Comes with two magnets, mounting magnets and foam tape adhesive.

- Size: 140mm x 360mm
- Carton 6



Rexel Code	On Pack Code	Colour
195120	1903764	White

## Nobo Magnetic Whiteboard

Complete with 2 magnets & reversible marker



Rexel Code	On Pack Code	Colour	Size
195003	QB05142ASTD	White (A)	220x280mm
195002	QB05142CD	Silver (B)	220x280mm
195027	QB05442ASTD	White (A)	280x360mm
195026	QB05442CD	Silver (B)	280x360mm

## Nobo Magnetic Dry-Erase Board

Magnetic dry-erase whiteboard with stylish plastic frame. Includes two magnets, one black ReWritable marker with an eraser and a mounting kit. Available in white, charcoal and black framed boards.

- Size: 585mm x 430mm
- Carton 4



Rexel Code	On Pack Code
195040	1903772

## Nobo Magnetic Whiteboard - Assorted

- Size 216 x 280mm

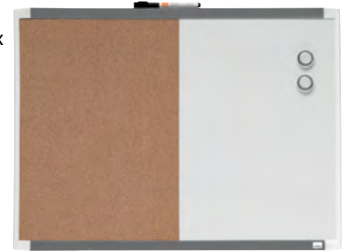


Rexel Code	On Pack Code	Colour
195001	1903816	Assorted

## Nobo Combination Whiteboard and Notice Board

Combination board featuring half magnetic dry-erase and half cork noticeboard surface. Includes two magnets, one black magnetic ReWritable marker with eraser and mounting kit. Stylish plastic frame. Available in white, charcoal and black framed boards.

- Size: 430mm x 585mm
- Carton 4



Rexel Code	On Pack Code
195060	1903784

## Nobo Whiteboard - Aluminium Frame

Magnetic dry-erase board with aluminium frame. Includes two 2-in-1 markers, four bubble magnets and one mini magnetic eraser. Can be mounted either vertically or horizontally.

- Size: 585mm x 430mm
- Carton 6



Rexel Code	On Pack Code
195050	1903777

## Nobo Whiteboard with Arched Frame

Magnetic dry-erase whiteboard with stylish black and silver arched frame. Includes one black magnetic ReWritable marker, two magnets and mounting kit.

- Carton 6



Rexel Code	On Pack Code	Size
195000	1903778	280mm x 215mm
195025	1903779	335mm x 280mm
195035	1903783	585mm x 430mm

# Home Range: Dry Wipe Boards



## Nobo Magnetic Combination Board - Silver

Combination board with multifunctional & modern frameless design. Silver magnetic writing surface with black foam squares for pinning notices and built-in storage for 4 markers and an eraser. Includes four rewritable markers (red, blue, black and green), mounting magnets and foam adhesive tape.

- Size: 390mm x 610mm
- Carton 6



Rexel Code	On Pack Code
195134	1903812

## Nobo Whiteboard - Blue & Pink

Magnetic dry-erase board with aluminium frame. Includes two 2-in-1 markers, two bubble magnets and one mini magnetic eraser. Can be mounted either vertically or horizontally.

- Size: 430mm x 585mm
- Carton 6



Rexel Code	On Pack Code	Colour
195044	2104176	Blue
195042	2104177	Pink

## Nobo Magnetic Whiteboard Weekly Organiser

Combination board featuring weekly organiser printed on magnetic dry-erase surface with the addition of a lower cork board. Includes mounting kit, a black magnetic ReWritable dry-erase marker and two magnets.

- Size: 190mm x 585mm
- Carton 6



Rexel Code	On Pack Code
195095	1903780

## Nobo Notice Board Black Frame

Cork board with modern plastic frame. Supplied with an easy mounting kit. Available in white, charcoal and black framed boards.

- Size: 430mm x 585mm
- Carton 6



Rexel Code	On Pack Code
195056	1903776

## Nobo 3-in-1 Monthly Organiser Whiteboard

Combination calendar board featuring a magnetic dry-erase surface with a monthly calendar grid and lower cork noticeboard. Black and silver frame. Includes mounting kit, a black magnetic ReWritable dry-erase marker and two magnets.

- Size: 430mm x 585mm
- Carton 6



Rexel Code	On Pack Code
195094	1903813

## Nobo Magnetic Whiteboard Weekly Organiser

For all your planning needs, the purple Dry Erase weekly organiser is a useful board for planning your weekly activities. Includes one black magnetic rewritable marker with eraser, mounting magnets and foam adhesive tape.

- Size: 140mm x 360mm
- Carton 6



Rexel Code	On Pack Code	Frame
195166	1904048	Purple Plastic
195162	1904047	Blue Plastic

SHREDDING

LAMINATING

BINDING

STAPLING

PUNCHING

SUNDRIES

PAPER &amp; BOARD

STORAGE

ERGONOMICS

GUILLOTINES

VISUAL COMMUNICATION

SHREDDING

LAMINATING

BINDING

STAPLING

PUNCHING

SUNDRIES

PAPER & BOARD

STORAGE

ERGONOMICS

GUILLOTINES

VISUAL COMMUNICATION

## Nobo Dry Erase Mini Black Markers

Mini ReWritables with magnetic eraser cap. Available in back bold colours – Low odour and non-toxic ink and fine tip.

- Carton 6
- Pack 6



Rexel Code	On Pack Code
195105	2104184

## Nobo Magnets – Pack 6

Quartet magnets - use to pinpoint progress and enhance the impact of information posted on most metal surfaces. Use on magnetic dry erase boards or other magnetic surfaces. Assorted colours - orange, purple and yellow, 6 magnets per pack.

- Size: 30mm
- Carton 9
- Pack 6



Rexel Code	On Pack Code
195154	1903790

## Nobo Dry-erase Cleaning Kit

Contains 4 low-odour dry-erase markers (black, red, green and blue), 1 foam eraser and spray cleaner.



Rexel Code	On Pack Code
192021	1903798

## Nobo Whiteboard Deepclene Plus™

- Aerosol cleaning foam optimised for use on glass whiteboards
- Optimised for cleaning glass whiteboards and restores the original board surface appearance
- Use regularly in conjunction with your usage and surface type.
- 150ml aerosol foam



Rexel Code	On Pack Code
192042	34538408

## Nobo Dry Erase Mini Assorted Markers

Mini ReWritables with magnetic eraser cap. Available in 6 bold colours – 1 x red, 1 x yellow, 1 x green, 1 x blue, 1 x purple, and 1 x black. Low odour and non-toxic ink and fine tip.

- Carton 6
- Pack 6



Rexel Code	On Pack Code
195100	1903792

## Nobo Whiteboard Dry Wipe Eraser

- Dry whiteboard eraser removes dry wipe marker ink residue from whiteboard surface
- For use on magnetic or non-magnetic whiteboards



Rexel Code	On Pack Code
192000	34531159

## Nobo Magnetic Board Marker Holder

- Holds 4 drywipe markers up to a maximum of 20mm diameter
- Magnetic backing allows for holder to be positioned where required on board



Rexel Code	On Pack Code
192026	8018500



# Flipchart Easels, OHP Film & Clip Frames



## Nobo Barracuda Mobile Easel

- Dry wipe magnetic surface
- Height adjustable (105cm to maximum height of 184cm) with mobile base and 5 locking castors.
- Pen tray.



Rexel Code	On Pack Code
190280	1902386

## Nobo Piranha Mobile Easel

- Mobile base for flexibility.
- Removable writing rule and folding pen tray.
- Dry wipe magnetic surface.
- Magnetic side arms to display sheets.
- Height adjustable from 105cm to maximum height of 184cm.



Rexel Code	On Pack Code
190277	1901920

## Rexpro Flip Chart Pad

- 50 Sheets.
- 60gsm Bond.



Rexel Code
190284

## Nobo Universal Printer OHP Film

Excellent quality, universally compatible. Ink-jet has removable strip on short side.

### Laser Mono Pack 50

190016 (33633740)

### Inkjet Pack 50

190010 (33634668)

### Write-on Film Pack 100

190020 (33638235)

### Universal Photocopier OHP Film Pack 100

190002 (33638237)



Suitable for use with all major copier brands. Coated both sides for ease of use. Used in single or stack feed machines.

## Nobo Clip Frames

Clip frames open at the front so pictures can be easily changed without removing the frame from wall. Ideal for frequently changed items such as menus, staff notices, special offers etc. All four frame edges lift up, pictures protected with a PVC sheet. Anti-glare PVC cover protects posters from dust and dirt. Weather-seal protects posters if used outside. Supplied with wall fixings.



Rexel Code	On Pack Code	H x W x D
190718	1902214 A4	370 x 248 x 17mm
190716	1902213 A3	458 x 335 x 17mm
190714	1902212 A2	652 x 478 x 17mm
190712	1902211 A1	899 x 652 x 17mm

## Nobo OHP Lamp 250W

Replacement Overhead Projector Lamps 24V/250W Although most Quantum overhead projectors come with twin lamps for back-up if one fails, it's advisable to keep a spare OHP lamp to hand. Make sure you choose the correct replacement lamp for your specific Quantum projector model for a professional, stress-free presentation.



Rexel Code	On Pack Code
190126	33730957

## Nobo Professional Tripod Screens

The brilliant matt white surface with black border provides a sharp, detailed image that can be easily viewed by everyone in the audience. The screen can be easily retracted into its housing to protect from damage.

- An overhead arm tilts the screen towards the audience
- Ideal for digital projectors or OHP
- 4:3 Tripod Screen



Rexel Code	On Pack Code	Size
190325	1902395	1500 x 1138mm
190335	1902396	1750 x 1325mm
190340	1902397	2000 x 1513mm

## Nobo Professional Wall Screens

The brilliant matt white surface provides a sharp, detailed image. The screen can be easily retracted into its housing to protect from damage. With optional extension brackets the screen can be mounted over a whiteboard or tilted towards the audience.

- 4:3 Wall Screen
- Can be mounted to either a wall or ceiling\*



Rexel Code	On Pack Code	Size
190300	1902391	1500 x 1138mm
190305	1902392	1750 x 1325mm
190310	1902393	2000 x 1513mm
190315	1902394	2400 x 1813mm
190320	1902398	Brackets

\*No fixing kit supplied, please use appropriate fixings for wall/ceiling type.

## Kensington Presenter Wireless with Red Laser

- Present like a pro with the Wireless Presenter with Red Laser.
- The intuitive four-button layout lets you easily navigate forward and back within your PowerPoint or Keynote slides
- Wireless nano receiver conveniently stores inside the battery
- No driver required.



Rexel Code	On Pack Code
200021	33374EU

## Nobo Telescopic Pointer Pen

Pen and Pointer in one.

- Screw cap covers writing tip of pen
- Pointer extends up to 625mm
- Blue ink



Rexel Code	On Pack Code
190166	34431151

## Performance Planning Boards

### Nobo 12 Month T-Card Kit



A larger kit to plan monthly or annually. For monthly use: put hours of the day along the top (7-8, 8-9) to plan detailed daily appointments. For annual use: put months across the top, using one slot per day in each month. Supplied as a complete kit with 12 x 32-slot, size 2 panels, 1 x 32-slot size 1 index panel, and top and bottom link bars with coloured title inserts. Complete with 10 packs of 100 size 2 T-Cards as shown, and 1 pack of 100 size 1 index cards. Metal construction. Fixing kit supplied – adhesive pads, hooks and screws for a choice of fitting. Size: 800 x 660 x 15mm (W x H x D).



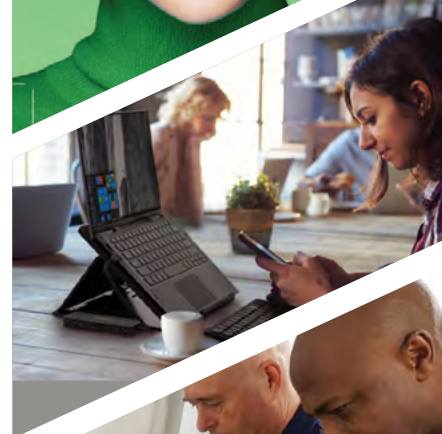
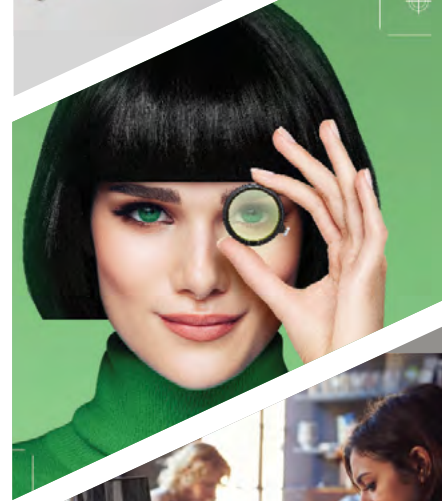
Cards available on request

Rexel Code	On Pack Code
194010	32938864





SHREDDING  
 LAMINATING  
 BINDING  
 STAPLING  
 PUNCHING  
 PAPER & BOARD  
 STORAGE  
 FILING  
 ERGONOMICS  
 GUILLOTINES  
 VISUAL  
 COMMUNICATION



[www.rexelsa.co.za](http://www.rexelsa.co.za)